

INSTRUCTIONS

1. Original and/or subsequent record used to evaluate the corner position.
2. Description of evidence found, note discrepancies in the record, state method of establishing lost or obliterated corners.
3. Description of monument and accessories set to perpetuate the corner position.
4. Sketch of corner, show all pertinent data which can best be shown in a sketch example, corner marking, topography ties, position of accessories, etc.
5. Certification must be signed and sealed by Land Surveyor registered in the State of Montana.
6. Fill in Cross Index & Section Diagram at bottom of sheet.

CERTIFIED CORNER RECORDATION

Corner 1/4 Cor. Sec. 31 only T. 36 N. R. 27 W. P.M.M. Lincoln County

- I. 1904 original G.L.O. record by Abraham L. Rinearson & Gordon C. Smith: Set stone and marked two bearing trees.

1969 remonumentation B.L.M. record by Roy G. Leedy: "The 1/4 sec. cor. of sec. 31, on the S. bdy. of the Tp., monumented with a broken shale stone, 16 x 8 x 8 ins., firmly set, with no visible mks., and witnessed by the remains of the original bearing trees:

A stump, bears N22° E. 21 lks. dist., with no visible mks.

A stump, bears S32° E. 28 lks. dist., mkd. 36 27W 1/4 S.

At the corner point

Set an iron post, 30 ins. long, 2 1/2 ins. diam., 24 ins. in the ground with brass cap mkd.

T36N R27W
1/4 S 31
1969

from which

A fir, 8 ins. diam., bears S38 1/2° E. 66 lks. dist., mkd. X BT.

A fir, 10 ins. diam., bears N12° W. 75 lks. dist., mkd. 1/4 S31 BT.

Bury the original stone alongside and raise a collar of stone, 2 ft. diam., around the iron post."

- II. Found a 2 1/2 ins. diam. iron pipe, 5 ins. out of ground with 3 1/4 ins. diam. B.L.M. brass cap marked as shown above, from which

A fir stump, bears S30° E. 19.2 ft. (29 lks.) dist., mkd. 36 27 1/4 S.

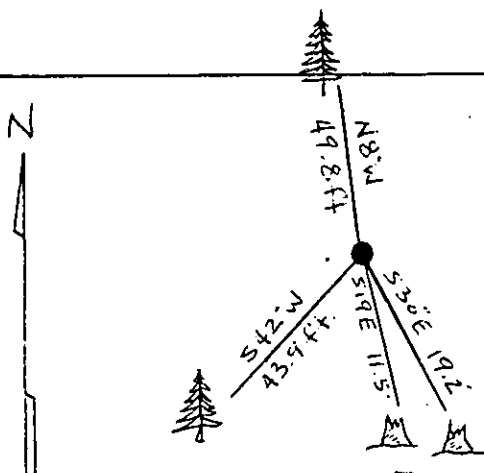
A fir stump, 10 ins. diam., bears S19° E. 11.5 ft. (17 lks.) dist., visible scribe and face.

A fir, 10 ins. diam., bears S42° W. 43.9 ft. (66 lks.) dist., healed face.

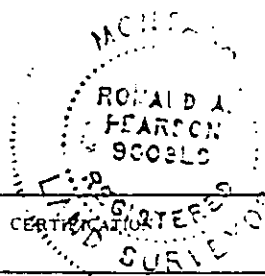
A fir, 18 ins. diam., bears N8° W. 49.8 ft. (75 lks.) dist., healed face.

- III. Painted red bands around the bearing trees and attached Land Survey Monument and Bearing Tree signs.

Magnetic Declination: 20° East



SKETCH OF CORNER



I, Rex Rice
certify the information shown herein is true and correct.

Rex O. Rice
Signature Ground Party Chief

I, Ronald A. Pearson
certify that this Corner Record correctly represents work performed by me or under my direction in compliance with the "Corner Recordation Act" (70-22-101, et seq., M.C.A.)

Ronald A. Pearson
Signature of Surveyor & Seal

Date 11/9/95 Reg. No. 900815

Employer: U.S. FOREST SERVICE

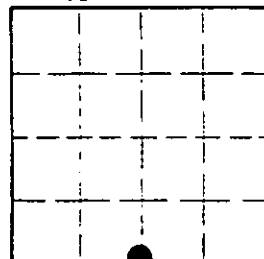
Office of Clerk and Recorder, County of LINCOLN. This "corner record" was filed for record on AUG 21, 1997

was noted on the cross-index plat and is assigned page No. 9954 in

book No. CORAL M. CUMMINGS By RUB
County Official

Cross Index No. Z-03 T. 36N R. 27W P.M.M.

Sec. 31



• corner this sheet