

INSTRUCTIONS

1. Original and/or subsequent record used to evaluate the corner position.
2. Description of evidence found, note discrepancies in the record, state method of establishing lost or obliterated corners.
3. Description of monument and accessories set to perpetuate the corner position.
4. Sketch of corner, show all pertinent data which can best be shown in a sketch example, corner marking, topography ties, position of accessories, etc.
5. Certification must be signed and sealed by Land Surveyor registered in the State of Montana.
6. Fill in Cross Index & Section Diagram at bottom of sheet.

CERTIFIED CORNER RECORDATION

Corner 1/4 Cor. Secs. 32 & 33 T. 36 N. R. 27 W. P.M.M. Lincoln County

- I. 1893 original G.L.O. record by Peter McCardell & Abram L. Jaqueth: Set stone and marked two bearing trees.

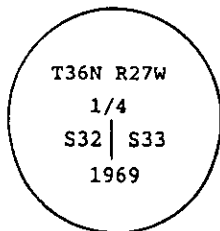
1969 remonumentation B.L.M. record by Roy G. Leedy: "The 1/4 sec. cor. of secs. 32 and 33, monumented with a limestone, 16 x 10 x 4 ins., firmly set, mkd. 1/4 on the W. face and witnessed by the remains of the original bearing trees:

A stump hole, bears S82°E, 58 lks. dist.

A stump, bears N75 1/2°W, 35 lks. dist., mkd. T.

At the corner point

Set an iron post, 30 ins. long, 2 1/2 ins. diam., 24 ins. in the ground with brass cap mkd.



from which

A fir, 10 ins. diam., bears S39°E, 46 lks. dist., mkd. 1/4 S33 BT.

A fir, 12 ins. diam., bears S75°W, 34 lks. dist., mkd. 1/4 S32 BT.

Bury the original stone alongside the iron post and raise a collar of stone, 2 ft. diam., around the iron post."

- II. Found a 2 1/2 ins. diam. iron pipe, 8 ins. out of a mound of stone with 3 1/4 ins. diam. B.L.M. brass cap marked as shown above, from which

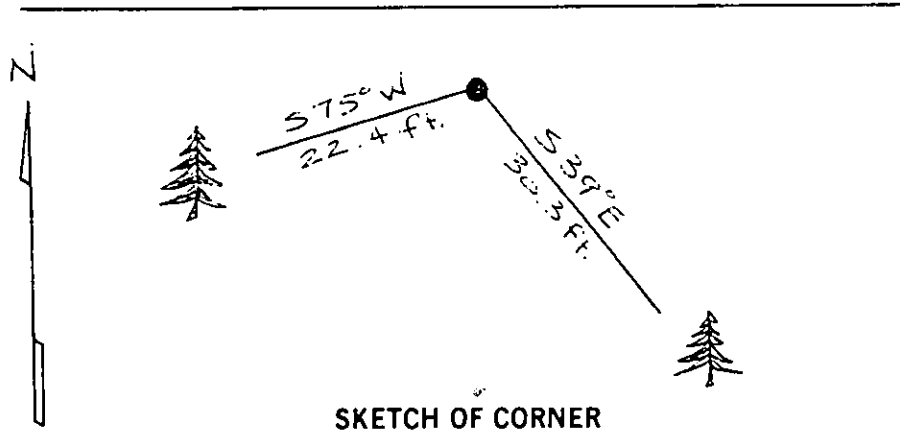
A fir, 11 ins. diam., bears S39°E, 30.3 ft. (46 lks.) dist., healed face

A fir, 14 ins. diam., bears S75°W, 22.4 ft. (34 lks.) dist., visible scribe.

No evidence of original bearing trees.

- III. Painted red bands around the bearing trees and attached Land Survey Monument and Bearing Tree signs.

Magnetic Declination: 20° East



CERTIFICATION

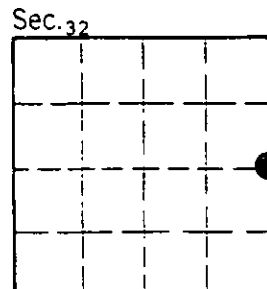
1. Rex Rice
certify the information shown herein is true and correct.
Rex O. Rice
Signature Ground Party Chief

2. Ronald A. Pearson
certify that this Corner Record correctly represents work performed by me or under my direction in compliance with the "Corner Recordation Act" (70-22-101, et seq., M.S.A.)
Ronald A. Pearson
Signature of Surveyor & Seal

Date: 11/6/95 Reg. No. 9008LS
Employer: U.S. FOREST SERVICE

Office of Clerk and Recorder, County of LINCOLN. This "corner record" was filed for record on AUG21,1997 was noted on the cross-index plat and is assigned page No. 9951, in book No. CORAL M. CUMMINGS By DUB County Official

Cross Index No. X-09 T. 36 N R. 27 W P.M.M.



• corner this sheet