

## INSTRUCTIONS

1. Original and/or subsequent record used to evaluate the corner position.
2. Description of evidence found, note discrepancies in the record, state method of establishing lost or obliterated corners.
3. Description of monument and accessories set to perpetuate the corner position.
4. Sketch of corner, show all pertinent data which can best be shown in a sketch example, corner marking, topography ties, position of accessories, etc.
5. Certification must be signed and sealed by Land Surveyor registered in the State of Montana.
6. Fill in Cross Index & Section Diagram at bottom of sheet.

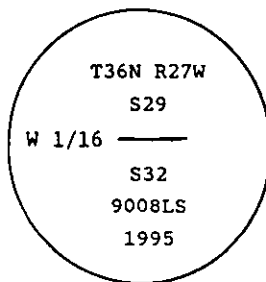
## CERTIFIED CORNER RECORDATION

Corner W 1/16, SEC. 29 T. 36 N. R. 27 W. P.M.M. Lincoln County

I. No previous record.

II. No evidence found.

III. At the calculated position shown by Certificate of Survey No. 2384 filed at Lincoln County Courthouse, Montana; set a 2 1/2 in. diam. by 30 ins. long aluminum pipe in mound of stone with 3 1/4 in. diam., U.S.D.A., Forest Service aluminum cap, marked as shown:



from which

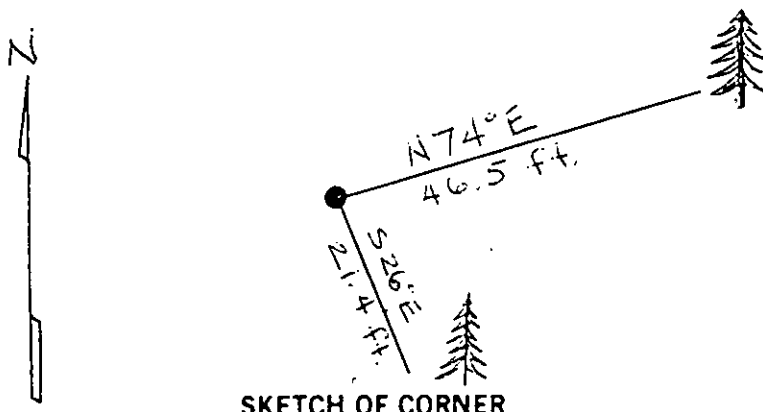
A fir, 11 ins. diam., bears N74° E, 46.5 ft. dist., mkd. W 1/16 S29 BT.

A fir, 10 ins. diam., bears S26° E, 21.4 ft. dist., mkd. W 1/16 S29 BT.

Painted red bands around the bearing trees and attached Land Survey Monument and Bearing Tree signs.

Set a 6 ft. galvanized steel guard post with Land Survey Marker & Property Boundary decals, East, 3.1 ft.

Magnetic Declination: 20° East



SKETCH OF CORNER

## CERTIFICATION

Jeff Hintz

I, \_\_\_\_\_  
certify the information shown herein is true and correct.

Signature Ground Party Chief:

Ronald A. Pearson

I, \_\_\_\_\_  
certify that this Corner Record correctly represents work performed by me or under my direction in compliance with the "Corner Recordation Act" (70-2-101 et seq., M.C.A.)

\_\_\_\_\_  
Signature of Surveyor & Seal

Date: 11/8/95 Reg. No. 9008LS

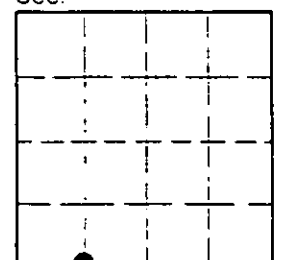
Employer: U.S. FOREST SERVICE

Office of Clerk and Recorder, County of LINCOLN This "corner record" was filed for record on AUG 21, 1997

was noted on the cross-index plat and is assigned page No. 9946 in book No. \_\_\_\_\_  
CORAL M. CUMMINGS By ALB  
County Official

Cross Index No. V-6 T. 36 N R. 27 W P.M.M.

Sec. 29



• - corner this sheet