

INSTRUCTIONS

1. Original and/or subsequent record used to evaluate the corner position.
2. Description of evidence found, note discrepancies in the record, state method of establishing lost or obliterated corners.
3. Description of monument and accessories set to perpetuate the corner position.
4. Sketch of corner, show all pertinent data which can best be shown in a sketch example, corner marking, topography ties, position of accessories, etc.
5. Certification must be signed and sealed by Land Surveyor registered in the State of Montana.
6. Fill in Cross Index & Section Diagram at bottom of sheet.

CERTIFIED CORNER RECORDATION

Corner 1/4 Cor. Secs. 28 & 29 T. 36 N. R. 27 W. P.M.M. Lincoln County

I. 1893 original G.L.O. record by Peter McCardell & Abram L. Jaqueth: Set stone and marked two bearing trees.

1968 remonumentation B.L.M. record by Woodrow E. Damm et al: "The 1/4 sec. cor. of secs. 28 and 29, monumented with a limestone, 18 x 9 x 4 ins., firmly set, mkd. 1/4 on the W. face and witnessed by the remains of the original bearing trees:

At the corner point

Set an iron post, 30 ins. long, 2 1/2 ins. diam., 24 ins. in the ground with brass cap mkd.

T36N R27W
1/4
S29 | S28
1968

from which

The original bearing trees:

A stump, 23 ins. diam., bears N33°W, 30 lks. dist., mkd. BT. (record)

A stump, 26 ins. diam., bears S37 1/2°E, 82 lks. dist., mkd. BT. (record)

The new bearing trees:

A fir, 11 ins. diam., bears S84°W, 17 lks. dist., mkd. 1/4 S29 BT.

A fir, 6 ins. diam., bears N38°W, 11 lks. dist., mkd. X BT.

Bury the original stone alongside the iron post."

II. Found a 2 1/2 ins. diam. iron pipe, 3 ins. out of ground with 3 1/4 ins. diam. B.L.M. brass cap marked as shown above, from which

A fir, 13 ins. diam., bears S84°W, 11.2 ft. (17 lks.) dist., healed face

A fir stump, 12 ins. diam., bears N38°W, 7.2 ft. (11 lks.) dist., no visible scribe.

A stump, 21 ins. diam., bears N33°W, 19.8 ft. (30 lks.) dist., mkd. BT.

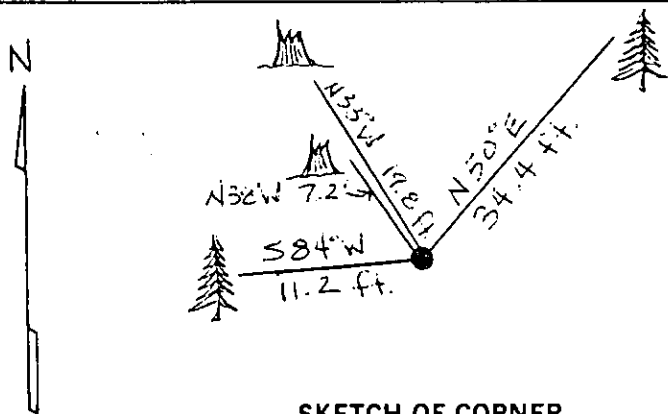
III. Established one new bearing tree:

A fir, 8 ins. diam., bears N50°E, 34.4 ft. dist., mkd. 1/4 S28 BT.

Painted red bands around the bearing trees and attached Land Survey Monument and Bearing Tree signs.

Set a 6 ft. galvanized steel guard post with Land Survey Marker & Property Boundary decals, South, 3 ft.

Magnetic Declination: 20° East



SKETCH OF CORNER

MONTANA
RONALD A. PEARSON
REGISTERED
9008LS

I, Rex Rice certify the information shown herein is true and correct.

Rex O. Rice
Signature Ground Engineer

I, Ronald A. Pearson certify that this Corner Record correctly represents work performed by me or under my direction in compliance with the "Corner Recordation Act" (70-22-101, et seq., M.C.A.).

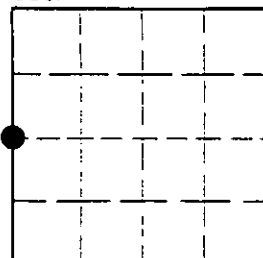
Ronald A. Pearson
Signature of Surveyor & Seal

Date: 11/9/95 Reg. No. 9008LS
Employer: U.S. FOREST SERVICE

Office of Clerk and Recorder, County of LINCOLN. This "corner record" was filed for record on AUG21,1997 9943 was noted on the cross-index plat and is assigned page No. 9943 in book No. CORAL M. CUMMINGS County Official Byler

Cross Index No. T-09 T. 36N R. 27W P.M.M.

Sec. 28



• - corner this sheet