

INSTRUCTIONS

1. Original and/or subsequent record used to evaluate the corner position.
2. Description of evidence found, note discrepancies in the record, state method of establishing lost or obliterated corners.
3. Description of monument and accessories set to perpetuate the corner position.
4. Sketch of corner, show all pertinent data which can best be shown in a sketch example, corner marking, topography ties, position of accessories, etc.
5. Certification must be signed and sealed by Land Surveyor registered in the State of Montana.
6. Fill in Cross Index & Section Diagram at bottom of sheet.

CERTIFIED CORNER RECORDATION

Corner C 1/4 Sec. 29 T. 36 N. R. 27 W. P.M.M. Lincoln County

- I. 1980 Certified Land Corner Recordation by Ralph Putnam, Reg. No. 4375S: "Set 5/8 in. rebar with cap marked Putnam 4375-S."
- II. Found 5/8 in. dia. steel rebar, 5 ins. above the ground with cap marked Putnam, 4375-S.
- III. From my retracement survey, accepted and remonumented rebar position with 2 1/2 ins. diam. by 30 ins. long aluminum pipe, 24 ins. in the ground, with 3 1/4 in. diam., U.S.D.A., Forest Service aluminum cap, marked as shown:

T36N R27W
C 1/4 S29
9008LS
1995

from which

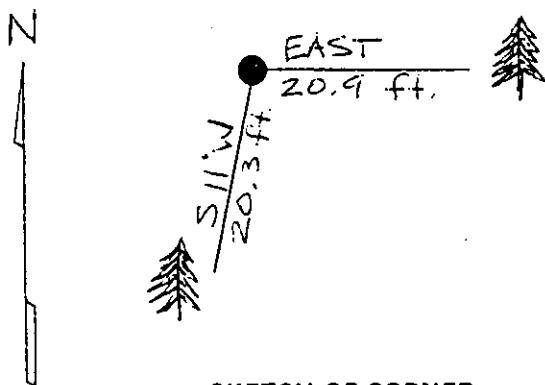
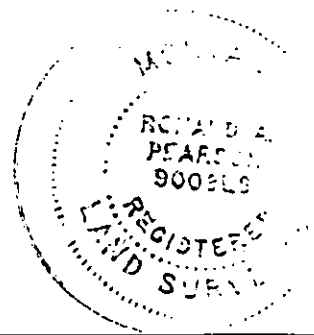
- A fir, 6 ins. diam., bears East, 20.9 ft. dist., mkd. C 1/4 S29 BT.
A fir, 8 ins. diam., bears S11°W, 20.3 ft. dist., mkd. C 1/4 S29 BT.

Painted red bands around the bearing trees and attached Land Survey Monument and Bearing Tree signs.

Set a 6 ft. galvanized steel guard post with Land Survey Marker & Property Boundary decals, East, 2.5 ft.

Bury found rebar and cap inside aluminum pipe.

Magnetic Declination: 20° East



SKETCH OF CORNER

CERTIFICATION

Jeff Hintz

I, Jeff Hintz
certify the information shown herein is true and correct.

Signature Ground Party Chief

Ronald A. Pearson

I, Ronald A. Pearson
certify that this Corner Record correctly represents work performed
by me or under my direction in compliance with the "Corner
Recordation Act" (70-22-101, et seq., M.C.A.)

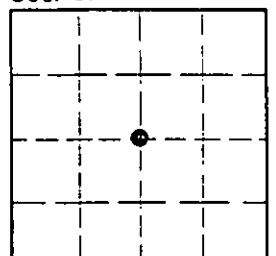
Ronald A. Pearson
Signature of Surveyor & Seal

Date: 11/7/95 Reg. No. 9008LS

Employer: U.S. FOREST SERVICE

Office of Clerk and Recorder, County of LINCOLN. This "corner
record" was filed for record on AUG21, 1997
was noted on the cross-index plat and is assigned page No. 9942
book No. CORAL M. CUMMINGS By oeb
County Official

Sec. 29



• - corner this sheet

T-7 36 N 27 W
Cross Index No. T. R. P.M.M.