

INSTRUCTIONS

1. Original and/or subsequent record used to evaluate the corner position.
2. Description of evidence found, note discrepancies in the record, state method of establishing lost or obliterated corners.
3. Description of monument and accessories set to perpetuate the corner position.
4. Sketch of corner, show all pertinent data which can best be shown in a sketch example, corner marking, topography ties, position of accessories, etc.
5. Certification must be signed and sealed by Land Surveyor registered in the State of Montana.
6. Fill in Cross Index & Section Diagram at bottom of sheet.

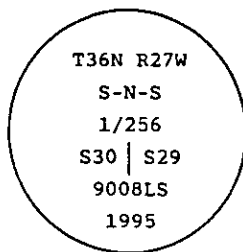
CERTIFIED CORNER RECORDATION

Corner S-N-S 1/256, Secs. 29 & 30 T. 36 N. R. 27 W. P.M.M. Lincoln County

I. No previous record.

II. No evidence found.

III. At the calculated position shown by Certificate of Survey No. 2385 filed at Lincoln County Courthouse, Montana; set a 3/4 in. diam. by 30 ins. long aluminum rod, 6 ins. below road surface with 3 1/4" diam., U.S.D.A., Forest Service aluminum cap, marked as shown:

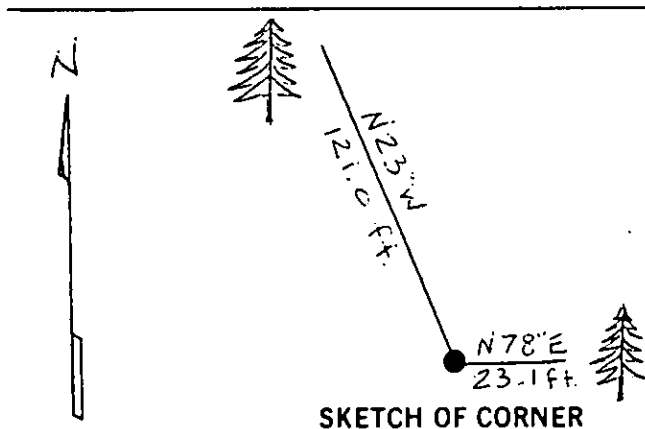


from which

A fir, 17 ins. diam., bears N78° E, 23.1 ft. dist., mkd. S-N-S 1/256 S29 BT.
A pine, 13 ins. diam., bears N23° W, 121 ft. dist., mkd. S-N-S 1/256 S30 BT.

Painted red bands around the bearing trees and attached Land Survey Monument and Bearing Tree signs.

Magnetic Declination: 20° East



SKETCH OF CORNER

CERTIFICATION

Mark Federman

I, Mark Federman, certify the information shown herein is true and correct.

Signature Ground Party Chief

Ronald A. Pearson

I, Ronald A. Pearson, certify that this Corner Record correctly represents work performed by me or under my direction in compliance with the "Corner Recordation Act" (70-2-101, et seq., M.C.A.).

Signature of Surveyor & Seal

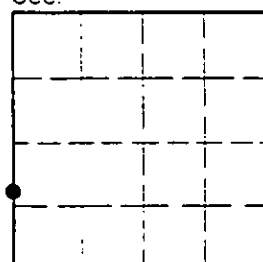
Date: 11/6/95 Reg. No. 9008LS

Employer: U.S. FOREST SERVICE

Office of Clerk and Recorder, County of LINCOLN. This "corner record" was filed for record on AUG 21, 1997 was noted on the cross-index plat and is assigned page No. 9940 in book No. CORAL M. CUMMINGS County Official by DER

Cross Index No. 75T-5 T. 36N R. 27W P.M.M.

Sec. 29



• corner this sheet