

INSTRUCTIONS

1. Original and/or subsequent record used to evaluate the corner position.
2. Description of evidence found, note discrepancies in the record, state method of establishing lost or obliterated corners.
3. Description of monument and accessories set to perpetuate the corner position.
4. Sketch of corner, show all pertinent data which can best be shown in a sketch example, corner marking, topography ties, position of accessories, etc.
5. Certification must be signed and sealed by Land Surveyor registered in the State of Montana.
6. Fill in Cross Index & Section Diagram at bottom of sheet.

CERTIFIED CORNER RECORDATION

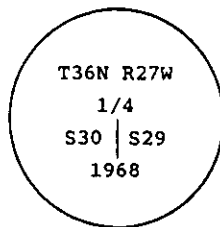
Corner 1/4 Cor. Secs. 30 & 29 T. 36 N. R. 27 W. P.M.M. Lincoln County

- I. 1903 original G.L.O. record by Abraham L. Rinearson & Gordon C. Smith: Set stone and marked two bearing trees.

1968 remonumentation B.L.M. record by Woodrow E. Damm et al: "The 1/4 sec. cor. of secs. 29 and 30, as determined from the remains of the original bearing trees:

At the corner point

Set an iron post, 30 ins. long, 2 1/2 ins. diam., 24 ins. in the ground with brass cap mkd.



from which

The original bearing trees:

- A stump, 22 ins. diam., bears N15° E. 10 lks. dist., mkd. 1/4 S29 BT. (record)
A fir, 20 ins. diam., bears S57° W. 12 lks. dist., mkd. S30 BT. (record)

The new bearing tree:

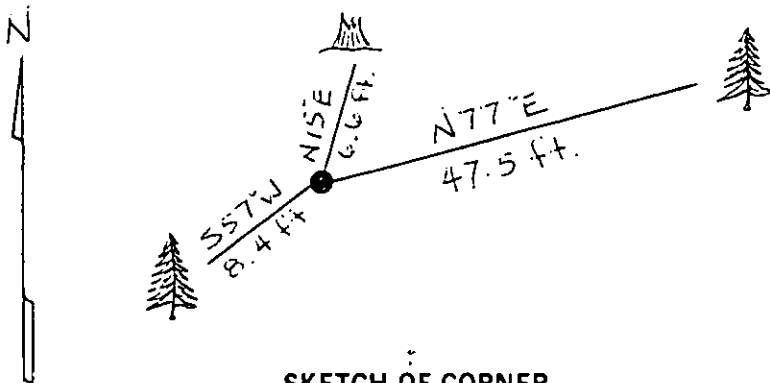
- A fir, 6 ins. diam., bears N77° E. 72 lks. dist., mkd. 1/4 S29 BT.

- II. Found a 2 1/2 ins. diam. iron pipe, 11 ins. out of ground with 3 1/4 ins. diam. B.L.M. brass cap marked as shown above, from which

- A stump, 20 ins. diam., bears N15° E. 6.6 ft. (10 lks.) dist., visible marks.
A fir, 9 ins. diam., bears N77° E. 47.5 ft. (72 lks.) dist., healed face
A fir, 17 ins. diam., bears S57° W. 8.4 ft. (12 lks.) dist., visible scribe.

- III. Painted red bands around the bearing trees and attached Land Survey Monument and Bearing Tree signs.

Magnetic Declination: 20° East



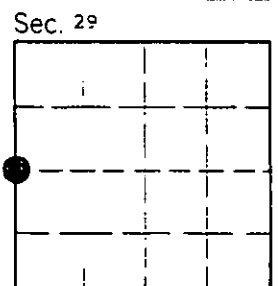
SKETCH OF CORNER

CERTIFICATION

I, Rex Rice
certify the information shown herein is true and correct.
Rex O. Rice
Signature Ground Party Chief
Ronald A. Pearson
I, Ronald A. Pearson
certify that this Corner Record correctly represents work performed by me or under my direction in compliance with the "Corner Recordation Act" (70-22-101, et seq., M.C.A.)
Ronald A. Pearson
Signature of Surveyor & Seal
Date: 11/9/95 Reg. No. 9008LS
Employer: U.S. FOREST SERVICE

Office of Clerk and Recorder, County of LINCOLN. This "corner record" was filed for record on AUG 21, 1997 was noted on the cross-index plat and is assigned page No. 9939 in book No. CORAL M. CUMMINGS County Official By DUB

Cross Index No. T-05 T. 36N R. 27W P.M.M.



• - corner this sheet