

INSTRUCTIONS

1. Original and/or subsequent record used to evaluate the corner position.
2. Description of evidence found, note discrepancies in the record, state method of establishing lost or obliterated corners.
3. Description of monument and accessories set to perpetuate the corner position.
4. Sketch of corner, show all pertinent data which can best be shown in a sketch example, corner marking, topography ties, position of accessories, etc.
5. Certification must be signed and sealed by Land Surveyor registered in the State of Montana.
6. Fill in Cross Index & Section Diagram at bottom of sheet.

CERTIFIED CORNER RECORDATION

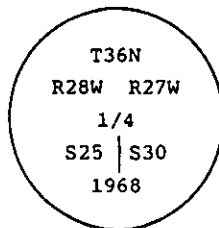
Corner 1/4 Cor. Secs. 25 & 30 T. 36 N. R. 27 W. P.M.M. Lincoln County

I. 1893 original G.L.O. record by Peter McCardell & Abram L. Jaqueth: Set stone and marked 2 bearing trees.

1968 remonumentation B.L.M. record by Woodrow E. Damm et al: "The 1/4 sec. cor. of secs. 25 and 30, on the W. bdy. of the Tp., monumented with a porphyry stone, 16 x 9 x 5 ins., firmly set, mkd. 1/4 on the W. face and witnessed by the remains of the original bearing trees:

At the corner point

Set an iron post, 30 ins. long, 2 1/2 ins. diam., 20 ins. in the ground with brass cap mkd.



from which

The original bearing trees:

A stump, 12 ins. diam., bears S32° E, 67 lks. dist., mkd. with an overgrown blaze.

(Record: S32° E, 57 lks.)

A pine, 20 ins. diam., bears S87° W, 48 lks. dist., mkd. S25. (Record: S87° W, 68 lks.)

The new bearing trees:

A pine, 8 ins. diam., bears N86° E, 36 lks. dist., mkd. 1/4 S30 BT.

Bury the original stone alongside the iron post."

II. Found a 2 1/2 ins. diam. iron pipe, 12 ins. out of ground with 3 1/4 ins. diam. B.L.M. brass cap marked as shown above, from which

A pine snag, 8 ins. diam., bears N86° E, 23.8 ft. (36 lks.) dist., 1/4 S30 BT visible.

A stump, 15 ins. diam., bears S32° E, 44.7 ft. (68 lks.) dist., visible scribe.

A pine snag, 15 ins. diam., bears S87° W, 31.1 ft. (48 lks.) dist., healed face

III. Established two new bearing trees:

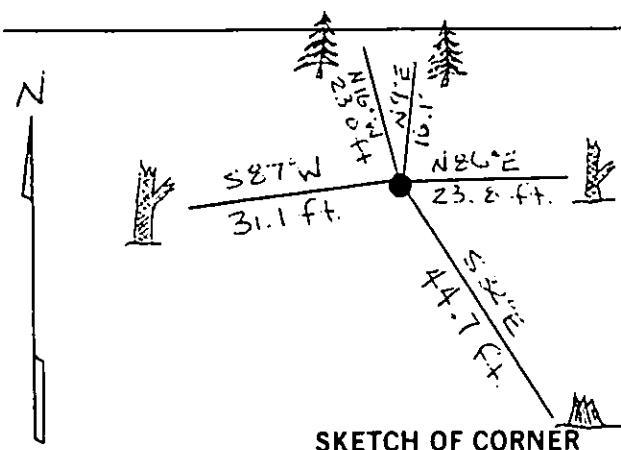
A fir, 12 ins. diam., bears N9° E, 16.1 ft. dist., mkd. 1/4 S30 BT.

A fir, 10 ins. diam., bears N16° W, 23.0 ft. dist., mkd. 1/4 S25 BT.

Painted red bands around the bearing trees and attached Land Survey Monument and Bearing Tree signs.

Set a 6 ft. galvanized steel guard post with Land Survey Marker & Property Boundary decals, East, 3 ft.

Magnetic Declination: 20° East



SKETCH OF CORNER

1. Rex Rice
 certify the information shown here is true and correct.
Rex O. Rice
 Signature Ground Party

1. Ronald A. Pearson
 certify that this Corner Record correctly represents work performed by me or under my direction in compliance with the "Corner Recordation Act" 1902-1901, et seq., MCA.
Ronald A. Pearson
 Signature of Surveyor & Seal

Date: 11/9/95 Reg. No. 9008LS
 U.S. FOREST SERVICE
 Employer: _____

Office of Clerk and Recorder, County of LINCOLN This "corner

record" was filed for record on AUG 21, 1997

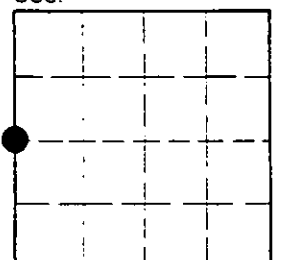
was noted on the cross-index plat and is assigned page No. 9936 in

book No. _____ CORAL M. CUMMINGS By DUB

County Official

Cross Index No. T-01 T. 36N R. 27W P.M.M.

Sec. 30



• - corner this sheet