

INSTRUCTIONS

1. Original and/or subsequent record used to evaluate the corner position.
2. Description of evidence found, note discrepancies in the record, state method of establishing lost or obliterated corners.
3. Description of monument and accessories set to perpetuate the corner position.
4. Sketch of corner, show all pertinent data which can best be shown in a sketch example, corner marking, topography (ties, position of accessories, etc.
5. Certification must be signed and sealed by Land Surveyor registered in the State of Montana.
6. Fill in Cross Index & Section Diagram at bottom of sheet.

CERTIFIED CORNER RECORDATION

Corner Cor. of Secs. 19, 20, 29, 30 T. 36 N. R. 27 W. P.M.M. Lincoln County

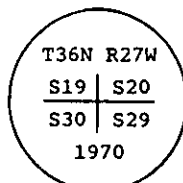
- I. 1903 original G.L.O. record by Abraham L. Rinearson & Gordon C. Smith: Set stone and marked four bearing trees.

1970 remonumentation B.L.M. record by Joseph E. French: "The cor. of secs. 19, 20, 29 and 30, monumented with a porphyry stone, 13 x 9 x 6 ins., firmly set, mkd. 2 notches on the S. and 3 notches on the E. edges, and witnessed by the remains of the original bearing trees:

- A fir, 14 ins. diam., bears N27° E, 130 lks. dist., mkd. T36N R27W S20 BT.
 A fir stump, 20 ins. diam., bears S3 1/2° W, 93 lks. dist., mkd. with a burned blaze.
 A fir, 18 ins. diam., bears N77 1/2° W, 60 lks. dist., mkd. with an overgrown blaze.

At the corner point

Set an iron post, 30 ins. long, 2 1/2 ins. diam., 24 ins. in the ground, with brass cap mkd.



from which new bearing trees:

- A fir, 7 ins. diam., bears S14 1/4° E, 15 lks. dist., mkd. T36N R27W S29 BT.
 A fir, 6 ins. diam., bears S41 3/4° W, 23 lks. dist., mkd. T36N R27W S30 BT.

Bury the original stone alongside the iron post."

- II. Found a 2 1/2 ins. diam. iron pipe, 3 ins. out of ground with 3 1/4 ins. diam. B.L.M. brass cap marked as shown above, from which

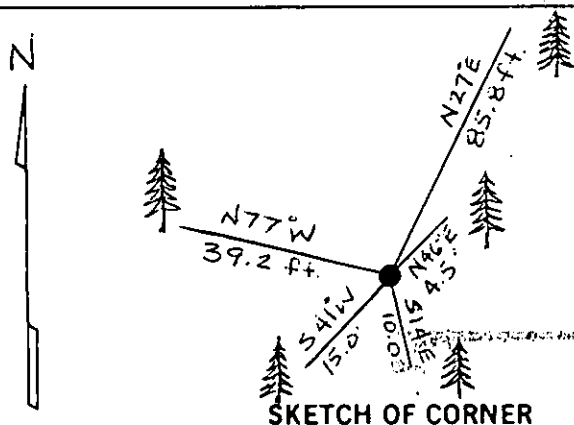
- A fir, 28 ins. diam., bears N27° E, 85.8 ft. (130 lks.) dist., burnt face.
 A fir, 10 ins. diam., bears S14° E, 10.0 ft. (15 lks.) dist., healed face.
 A fir, 8 ins. diam., bears S41° W, 15.0 ft. (23 lks.) dist., healed face.
 A fir, 26 ins. diam., bears N77° W, 39.2 ft. (59 lks.) dist., healed face.

- III. Establish one new bearing tree:

A fir, 12 ins. diam., bears N46° E, 4.5 ft. dist., mkd. T36N R27W S20 BT.

Painted red bands around the bearing trees and attached Land Survey Monument and Bearing Tree signs.

Magnetic Declination: 20° East



SKETCH OF CORNER

Thomas Hommel
 certify the information shown hereby is true and correct.

Thomas Hommel
 Signature Ground Party Chief

Ronald A. Pearson
 certify that this Corner Record correctly represents work performed by me or under my direction in compliance with the "Corner Recordation Act" (70-22-101, et seq., M.C.A.)

Ronald A. Pearson
 Signature of Surveyor & Seal

Date: 11/13/95 Reg. No. 90081S

Employer: U.S. FOREST SERVICE

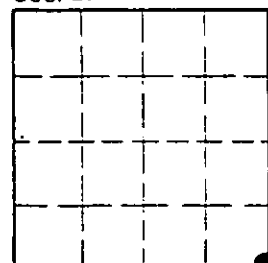
Office of Clerk and Recorder, County of LINCOLN This "corner record" was filed for record on AUG 21, 1997

was noted on the cross-index plat and is assigned page No. 9932 in book No. CORAL M. CUMMINGS By DLB

County Official

Cross Index No. R-05 T. 36N R. 27W P.M.M.

Sec. 19



• corner this sheet