

INSTRUCTIONS

1. Original and/or subsequent record used to evaluate the corner position.
2. Description of evidence found, note discrepancies in the record, state method of establishing lost or obliterated corners.
3. Description of monument and accessories set to perpetuate the corner position.
4. Sketch of corner, show all pertinent data which can best be shown in a sketch example, corner marking, topography (lies, position of accessories, etc.
5. Certification must be signed and sealed by Land Surveyor registered in the State of Montana.
6. Fill in Cross Index & Section Diagram at bottom of sheet.

CERTIFIED CORNER RECORDATION

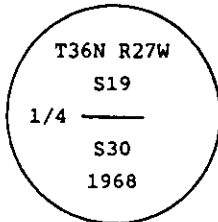
Corner 1/4 Cor. Secs. 19 & 30 T. 36 N. R. 27 W. P.M.M. Lincoln County

- I. 1903 original G.L.O. record by Abraham L. Rinearson & Gordon C. Smith: Set stone and marked two bearing trees.

1968 remonumentation B.L.M. record by Woodrow E. Damm et al: "The 1/4 sec. cor. of secs. 19 and 30. monumented with a porphyry stone, 16 x 10 x 4 ins., firmly set, mkd. 1/4 on the N. face and witnessed by the remains of the original bearing trees:

At the corner point

Set an iron post, 30 ins. long, 2 1/2 ins. diam., 24 ins. in the ground with brass cap mkd.



from which

The original bearing trees:

A stump, bears S76°W, 29 lks. dist., mkd. with an overgrown blaze. (record)

A fir, 18 ins. diam., bears N28 3/4°W, 29 lks. dist., mkd. with an overgrown blaze. (Record)

The new bearing tree:

A pine, 7 ins. diam., bears S5°E, 16 lks. dist., mkd. 1/4 S30 BT.

Bury the original stone alongside the iron post."

- II. Found a 2 1/2 ins. diam. iron pipe, 6 ins. out of ground with 3 1/4 ins. diam. B.L.M. brass cap marked as shown above, from which

A pine stump with log, bears S5°E, 10.1 ft. (15 lks.) dist.; record 16lks; healed face.

A fir stump, bears S76°W, 19.1 ft. (29 lks.) dist., no visible scribe.

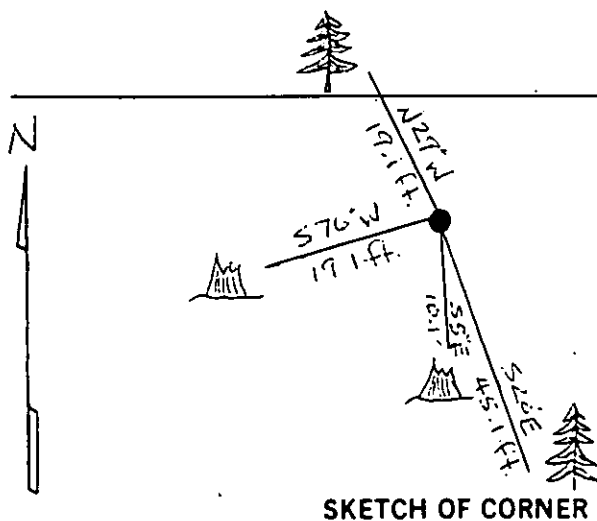
A fir, 19 ins. diam., bears N29°W, 19.1 ft. (29 lks.) dist., healed face

- III. Establish one new bearing tree:

A fir, 7 ins. diam., bears S20°E, 45.1 ft. dist., mkd. 1/4 S30 BT.

Painted red bands around the bearing trees and attached Land Survey Monument and Bearing Tree signs.

Magnetic Declination: 20° East



SKETCH OF CORNER

MONTANA
RONALD A. PEARSON
9008LS

CERTIFICATION

Thomas Hommel
I certify the information shown herein is true and correct.

Signature Ground Party Chief:
Ronald A. Pearson

I certify that this Corner Record correctly represents work performed by me or under my direction in compliance with the "Corner Recordation Act" (70-2-101 et seq., M.C.)

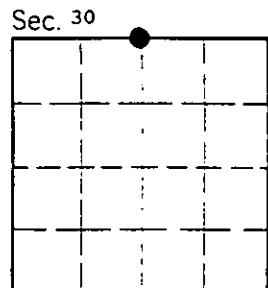
Signature of Surveyor & Seal

Date: 11/7/95 Reg. No. 9008LS
U.S. FOREST SERVICE
Employer:

Office of Clerk and Recorder, County of LINCOLN. This "corner record" was filed for record on AUG21,1997 was noted on the cross-index plat and is assigned page No. 9930 in book No. CORAL M. CUMMINGS By deb

County Official

Cross Index No. R-03 T. 36N R. 27W P.M.M.



• - corner this sheet