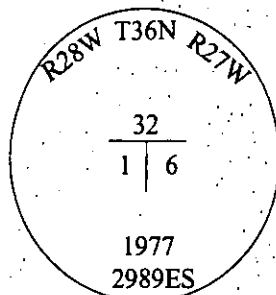


CERTIFIED CORNER RECORDATION

Corner CC Sec. 1 & 6 T. 36N R. 27W&28W P.M., MT Lincoln County

- I. 1893 G.L.O. Original Record by Peter McCardell et. al.: Set a post, 4 ft. long, 7 ins. square, 24 ins. in the ground, for closing cor. to T36N R27&28W, mkd. "CC T36N" on S, "R27W S6" on E, and "R28W S1" on W faces, and 6 notches on S.E and W. faces. Established three bearing trees.
- 1904 G.L.O. Resurvey and Reestablishment Record by Abraham L. Rinearson et. al.: The closing cor. of T36N R27&28W, which is a post nearly destroyed, with bearing trees also destroyed. At the corner point, as determined by the post, set a fir post, 3 ft. long, 3 ins. square, 24 ins. in the ground, for the closing cor. of T36N R27&28W, mkd. "CC T36N" on S., "R27W S6" on E., and "R28W S1" on W. faces, with 6 grooves on S.E. and W. Faces. Established two new bearing trees.
- 1980 Certified Corner Recordation by D.K. Marquardt Registration No. 2989 ES: Found the S.E. bearing tree, which is a stump. At the corner point, as determined by record bearing and distance from the found stump, set a brass cap, mkd. as shown. Established two new bearing trees.



- II. Found a 2 in. diam. iron pipe, with a 2 1/4 in. diam. brass cap, lying loose, on top of the ground, mkd. as shown above.

from which:

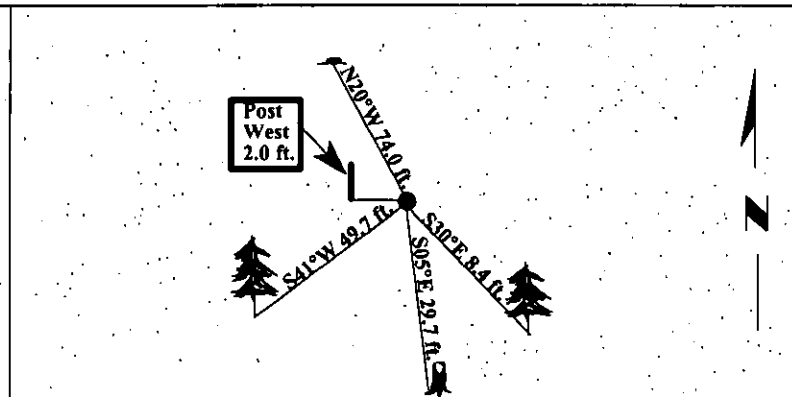
- A stump hole, bears N20°W, 74.0 ft. dist. from the corner. (1893-record-N25°W)
- A pine, 12 ins. diam., bears S41°W, 49.7 ft. dist., with visible scribe. (1981-record-S38°W)
- A pine stump, bears S05°E, 29.7 ft. dist., with a chopped face. (1904-record)
- A pine, 11 ins. diam., bears S30°E, 8.4 ft. dist., with a healed face. (1981-Record-9.54 ft.)

- III. Reset monument from the record bearing and distance from the S.E. 1904 found stump, with the cap 7 ins. above the ground. A stump hole lies at record distance of the corner, this being the 1893 original N.W. bearing tree.

Set a 6 ft. steel post, West, on property line, 2.0 ft. dist. of the corner, with Land Survey Monument and Property Boundary decals attached.

Painted bearing trees and attached Land Survey Monument and Bearing Tree signs.

Magnetic Declination: 20° East.



SKETCH OF CORNER

CERTIFICATION

I, Mark Federman
certify the information shown herein is true and correct.

I, Ronald A. Pearson
certify that this Corner Record correctly represents work performed by me or under my direction in compliance with the "Corner Recordation Act" (70-22-101, et seq., M.C.A.)

Signature of Surveyor & Seal

Date: 04/14/97

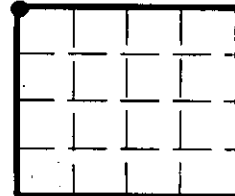
Reg. No.: 9008LS

Employer: U.S. FOREST SERVICE

Office of Clerk and Recorder, County of LINCOLN. This "corner record" was filed for record on JULY 31, 1997 was noted on the cross-index plat and is assigned page No. 9869 in book No. CORAL M. CUMMINGS By DUB

County Official

Sec. 6



• - corner this sheet

Cross Index No.

A-1

T.

36N

R.

27W

P.M., MT

28W