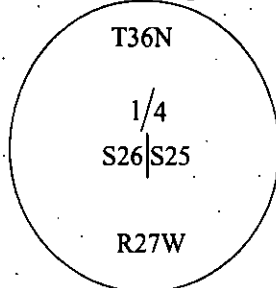


# CERTIFIED CORNER RECORDATION

Corner 1/4 Sec. 25&26 T. 36N R. 27W P.M., MT Lincoln County

I. 1893 G.L.O. Original Record by Peter McCardell et. al.: Set a limestone, 13X10X6 ins., 9 ins. in the ground for 1/4 sec. cor. mkd. "1/4" on the W. face. Established two bearing trees.

1975 Certified Corner Recordation by D.K. Marquardt No. ES 2989: Found square post, (no record), old bearing tree marker on tree facing S.E., Using marker as an approximate tie, the corner falls at the post. From the post measured S79°W, 6.5 ft. dist., found an old root crown. At the corner position, set an iron pipe, 30 ins. long, 2 ins. diam., with brass cap mkd. as shown. Established two bearing trees.

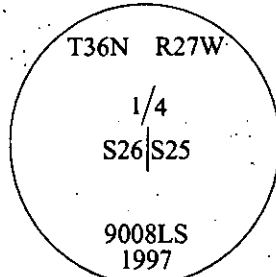


II. Found a 2 in. diam. iron pipe, firmly set, protruding 2 ins. above the ground, no cap attached to pipe. from which:

A rotted stump crown, bears S79°W, 7.0 ft. dist. from corner, with visible scribing laying along-side. (G.L.O.-record-S78°W, 9 lks.-5.94 ft.)

A 4" square wooden post, lying next to pipe. (no record)

III. Accepted position of the found pipe, as per the 1975 Certified Corner Recordation done by ES 2989, set in its place, an aluminum pipe, 30 ins. long, 2 1/2 in. diam., set flush in a mound of stone, with a 3 1/4 in. diam. aluminum cap, mkd. as shown below:



Established two bearing trees and set one post:

A fir, 10 ins. diam., bears N27°E, 30.9 ft. dist., mkd. "1/4 S25 BT".

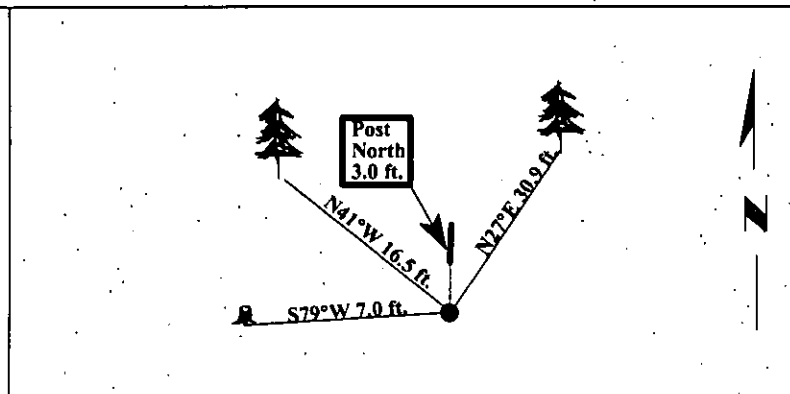
A fir, 11 ins. diam., bears N41°W, 16.5 ft. dist., mkd. "1/4 S26 BT".

A 6 ft. steel post, North, on property line, 3.0 ft. dist. from the corner.

Painted bearing trees and attached Land Survey Monument and Bearing Tree signs.

Attached Land Survey Monument and Property Boundary decals to the post.

Magnetic Declination: 20° East.



SKETCH OF CORNER

CERTIFICATION

I, Rex O. Rice  
certify the information shown herein is true and correct.

I, Ronald A. Pearson  
certify that this Corner Record correctly represents work performed by me or under my direction in compliance with the "Corner Recordation Act" (70-22-101, et seq., M.C.A.)

[Signature]  
Signature of Surveyor & Seal

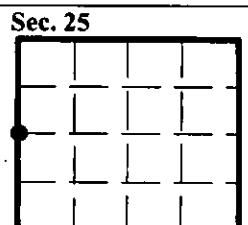
Date: 05/27/97

Reg. No.: 9008LS

Employer: U.S. FOREST SERVICE

Office of Clerk and Recorder, County of LINCOLN. This "corner record" was filed for record on JULY 31, 1997 was noted on the cross-index plat and is assigned page No. 9853 in book No. CORAL M. CUMMINGS By ALB

County Official



• - corner this sheet

Cross Index No. T-21 T. 36N R. 27W P.M., MT