

# CERTIFIED CORNER RECORDATION

Corner 1/4 Sec. 25&30 T. 36N R. 27W P.M., MT Lincoln County

- I. 1893 G.L.O. Original Record by Peter McCardell et. al.: Set a red sandstone, 14X12X10 ins., 10 ins. in the ground for 1/4 sec. cor. mkd. "1/4" on the W. face.

Established two bearing trees:

A fir, 5 ins. diam., bears S27°E, 28 lks. dist., mkd. "1/4 S BT".

A fir, 10 ins. diam., bears S80°W, 67 lks. dist., mkd. "1/4 S BT".

1975 Certificate of Survey No 152 by D.K. Marquardt Regulation No. 2989 ES: Found original stone.

1986 Certificate of Survey No. 1496 by D.K. Marquardt Regulation No. 2989 ES: Found original stone.

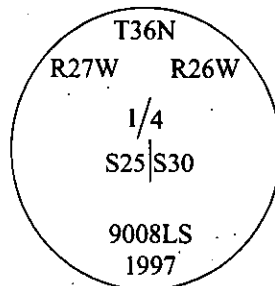
- II. Found original stone, 8x6 ins., firmly set, protruding 3 ins. above the ground, mkd. "1/4" on W. face.

from which:

A pine, 14 ins. diam., bears S12°E, 29.3 ft. dist., with a healed face. (no record)

A pine, 11 ins. diam., bears S33°W, 9.2 ft. dist., with a healed face. (no record)

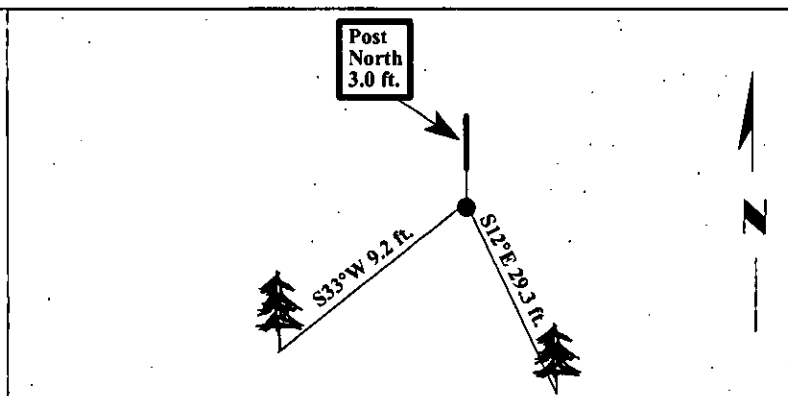
- III. At the corner point, as determined by the found stone, set an aluminum pipe, 30 ins. long, 2 1/2 in. diam., 23 ins. in the ground, surrounded by a 2.0 ft. diam. rock collar, with a 3 1/4 in. diam. brass cap, mkd. as shown:



Set a 6 ft. steel post, North, on property line, 3.0 ft. dist. from the corner, with Land Survey Monument and Property Boundary decals attached. No original bearing trees found.

Painted bearing trees and attached Land Survey Monument and Bearing Tree signs.

Magnetic Declination: 20° East.



SKETCH OF CORNER

CERTIFICATION

I, Mark Federman

certify the information shown herein is true and correct.

I, Ronald A. Pearson

certify that this Corner Record correctly represents work performed by me or under my direction in compliance with the "Corner Recordation Act" (70-22-101, et seq., M.C.A.)

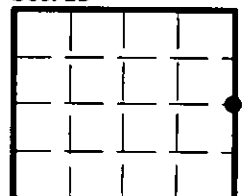
Ronald A. Pearson  
Signature of Surveyor & Seal

Date: 05/05/97

Reg. No.: 9008LS

Employer: U.S. FOREST SERVICE

Sec. 25



Office of Clerk and Recorder, County of LINCOLN. This "corner record" was filed for record on JULY 31, 1997 was noted on the cross-index plat and is assigned page No. 9851

in book No. CORAL M. CUMMINGS By RLB

County Official

Cross Index No. T-25 T. 36N R. 27W P.M., MT