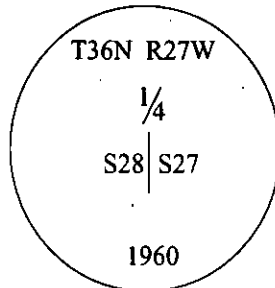


CERTIFIED CORNER RECORDATION

Corner 1/4 Sec. 27&28 T. 36N R. 27W P.M., MT Lincoln County

I. 1893 G.L.O. Original Record by Peter McCardell et. al.: Set a limestone, 12X8X7 ins., 8 ins. in the ground for 1/4 sec. cor. mkd. "1/4" on the W. face. Established two bearing trees.

1959-60 B.L.M. Remonumentaton Record by David R. Cunningham et. al.: The 1/4 sec. cor. of secs. 27 and 28, monumented with a limestone, 10x8x6 ins., firmly set, mkd. as described in the original record and witnessed by the remains of the original bearing trees. At the corner position, set an iron post, 30 ins. long, 2 1/2 in. diam., 28 ins. in the ground, in concrete, with the brass cap mkd. as shown:



Established one new bearing tree:

A fir, 6 ins. diam., bears N30 1/4°E, 41 lks. dist., mkd. "1/4 S27 BT".

Bury the original stone alongside and raise a mound of stone, 3.0 ft. base, 2.0 ft. high, W. of the iron post.

II. Found a 3 1/4 in. diam. BLM brass cap, firmly set, protruding 2 ins. above the ground, and mkd. as shown above. A mound of stone, 3.0 ft. diam., West, 1.0 ft. dist. from the corner.

from which:

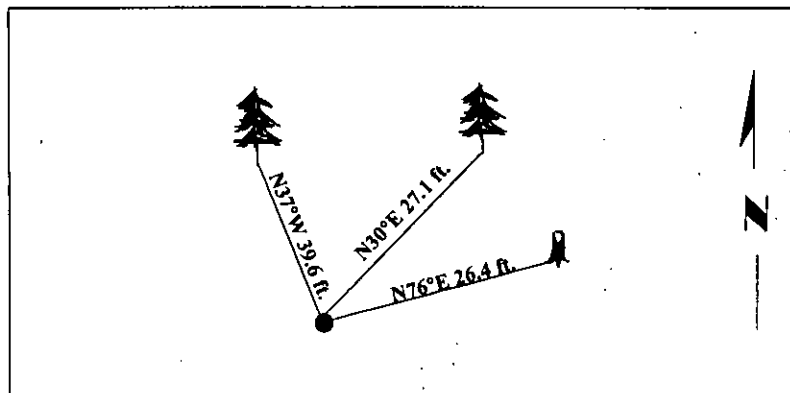
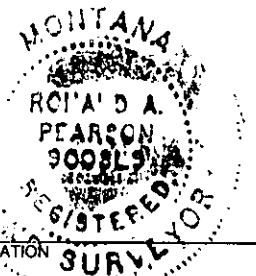
A fir, 12 ins. diam., bears N30°E, 27.1 ft. dist., with a healed face.. (BLM-record)

A stump, bears N76°E, 26.4 ft. dist., with chop marks. (GLO-record)

A fir, 20 ins. diam., bears N37°W, 39.6 ft. dist., with visible scribe. (GLO-record)

III. Painted bearing trees and attached Land Survey Monument and Bearing Tree signs. K-tag located, South, 400 ft. dist. from the corner.

Magnetic Declination: 20° East.



SKETCH OF CORNER

I. Mark Federman

certify the information shown herein is true and correct.

I. Ronald A. Pearson

certify that this Corner Record correctly represents work performed by me or under my direction in compliance with the "Corner Recordation Act" (70-22-101, et seq., M.C.A.)

[Signature]
Signature of Surveyor & Seal

Date: 05/05/97

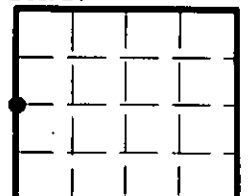
Reg. No.: 9008LS

Employer: U.S. FOREST SERVICE

Office of Clerk and Recorder, County of LINCOLN. This "corner record" was filed for record on JULY 31, 1997 was noted on the cross-index plat and is assigned page No. 9847 in book No. CORAL M. CUMMINGS By RLB

County Official

Sec. 27



● - corner this sheet

Cross Index No. T-13 T. 36N R. 27W P.M., MT

Adopted July 1, 1981, Montana Board of Professional Engineers & Land Surveyors