

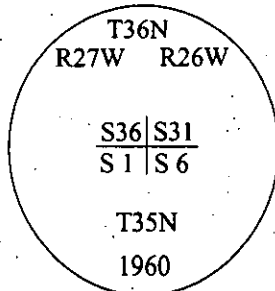
CERTIFIED CORNER RECORDATION

Corner S.E. Sec. 36 T. 36 N R. 27 W P.M., MT Lincoln County
Cor.

I. 1893 G.L.O. Original Record by Peter McCardell et. al.: Set a limestone, 13x12x7 ins., 9 ins. in the ground, for cor. to T35 & 36N and R26 & 27W, mkd. with 6 notches on each edge. from which:

- A fir, 8 ins. diam., bears N77°30'E, 40 lks. dist., mkd. "T36N R26W S31 BT".
- A fir, 8 ins. diam., bears S79°30'E, 89 lks. dist., mkd. "T35N R26W S6 BT".
- A fir, 14 ins. diam., bears S67°W, 62 lks. dist., mkd. "T35N R27W S1 BT".
- A larch, 36 ins. diam., bears N26°W, 35 lks. dist., mkd. "T36N R27W S36 BT".

1959-60 B.L.M. Remonumentation Record by David R. Cunningham et. al.: The cor. of T35&36, R26&27W, identical with cor. no. 1 of the H.E.S. no. 781, monumented with a limestone, 13x12x7 ins., firmly set, and mkd. with 6 grooves on each edge, and witnessed by the remains of the original bearing trees. At the corner point, set an iron post, 30 ins. long, 2 1/2 in. diam., 26 ins. in the ground, in concrete, with the brass cap mkd. as shown:



Established three new bearing trees:

- A fir, 6 ins. diam., bears S12 1/4°E, 71 lks. dist., mkd. "T35N R26W S6 BT".
- A larch, 7 ins. diam., bears S60 3/4°W, 41 lks. dist., mkd. "T35N R27W S1 BT".
- A fir, 10 ins. diam., bears N2 3/4°W, 80 lks. dist., mkd. "T36N R27W S36 BT".

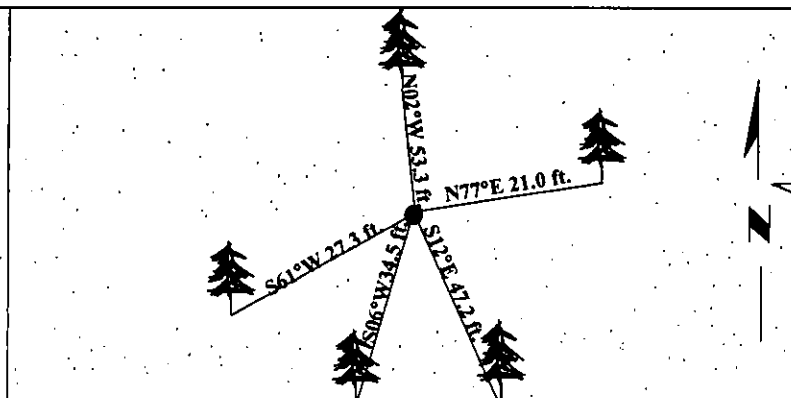
Bury the original stone alongside and raise a mound of stone, 3 ft. base, 2 ft. high, S. of the iron post.

II. Found a 2 1/2 in. diam. iron pipe, firmly set, protruding 4 ins. above the ground, with a 3 1/4 in. diam. brass cap mkd. as shown above. from which:

- A fir, 24 ins. diam., bears N77°E, 21.0 ft. dist., with visible scribe. (GLO-record)
- A fir, 9 ins. diam., bears S12°E, 47.2 ft. dist., with a healed face. (BLM-record)
- A larch, 32 ins. diam., bears S06°W, 34.5 ft. dist., with visible scribe. (GLO-record)
- A larch, 9 ins. diam., bears S61°W, 27.3 ft. dist., with a healed face. (BLM-record)
- A fir, 24 ins. diam., bears N02°W, 53.3 ft. dist., with visible scribe. (GLO-record)

III. Painted bearing trees and attached Land Survey Monument and Bearing Tree signs.

Magnetic Declination: 20° East.



SKETCH OF CORNER

CERTIFICATION	
I. Rex O. Rice	certify the information shown herein is true and correct.
I. Ronald A. Pearson	
certify that this Corner Record correctly represents work performed by me or under my direction in compliance with the "Corner Recordation Act" (70-22-101, et seq., M.C.A.)	
Signature of Surveyor & Seal	
Date: 06/11/97	
Reg. No.: 9008LS	
Employer: U.S. FOREST SERVICE	

Office of Clerk and Recorder, County of LINCOLN This "corner record" was filed for record on JULY 31, 1997 was noted on the cross-index plat and is assigned page No. 9841 in book No. _____

CORAL M. CUMMINGS County Official

Cross Index No. Z-25 T. 36N R. 27W P.M., MT

Adopted July 1, 1981, Montana Board of Professional Engineers & Land Surveyors

Sec. 36



• - corner this sheet