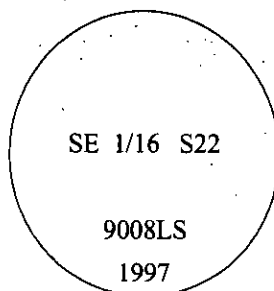


# CERTIFIED CORNER RECORDATION

Corner SE 1/16 Sec. 22 T. 36N R. 27W P.M., MT Lincoln County

- I. 1984 Certificate of Survey No. 1268 by Charles W. Doyle, No. 2516 S: Set a 5/8 in. x 24 in. rebar with plastic cap, stamped "2516 S".
- II. Found a 5/8 in. diam. rebar, firmly set, protruding 3 ins. above the ground, with a 1 1/4 in. diam. yellow plastic cap, stamped "Doyle 2516 S". No bearing trees found.
- III. Accepted the position of the found rebar, and set a 3/4 in. diam. x 30 ins. long aluminum rod, 24 ins. in the ground, with a 3 1/4 in. diam. aluminum cap, mkd. as shown. Built a 2.0 ft. x 3.0 ft. diam. rock collar around the monument.

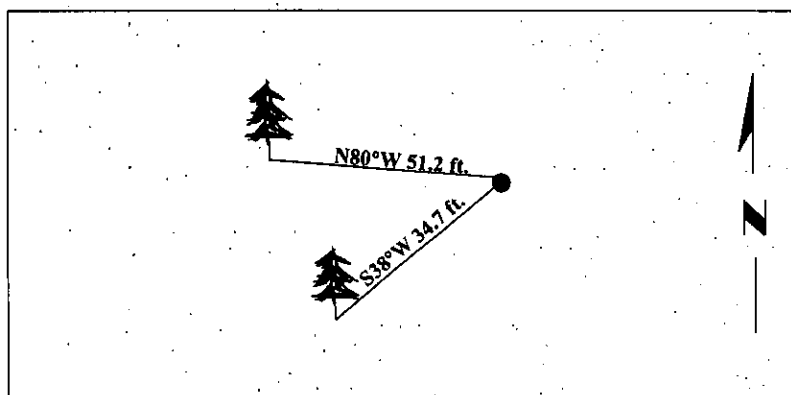


Established two bearing trees:

A fir, 13 ins. diam., bears N80°W, 51.2 ft. dist., mkd. "X" on snowblaze "BT".  
A fir, 13 ins. diam., bears S38°W, 34.7 ft. dist., mkd. "SE 1/16 S22 BT".

Drove the found rebar flush with the ground, next to the aluminum rod.  
Painted bearing trees and attached Land Survey Monument and Bearing Tree signs.

Magnetic Declination: 20° East.



SKETCH OF CORNER

CERTIFICATION

I, Rex O. Rice certify the information shown herein is true and correct.

I, Ronald A. Pearson certify that this Corner Record correctly represents work performed by me or under my direction in compliance with the Corner Recordation Act, (70-22-101, et seq., M.C.A.)

Signature of Surveyor & Seal

Date: 06/04/97

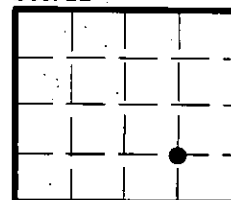
Reg. No.: 9008LS

Employer: U.S. FOREST SERVICE

Office of Clerk and Recorder, County of LINCOLN. This "corner record" was filed for record on JULY 31, 1997 was noted on the cross-index plat and is assigned page No. 9833 in book No. CORAL M. CUMMINGS

County Official

Sec. 22



• - corner this sheet

Gross Index No. Q-16 T. 36N R. 27W P.M., MT

Adopted July 1, 1981, Montana Board of Professional Engineers & Land Surveyors