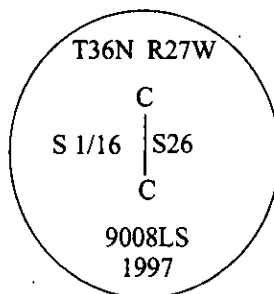


CERTIFIED CORNER RECORDATION

Corner CS 1/16 Sec. 26 T. 36N R. 27W P.M., MT Lincoln County

- I. 1993 Certificate of Survey No. 2028 by Dawn Marquardt Registration No. 7328 S: Set a 5/8 in. x 24 in. rebar with plastic cap, stamped "7328 S".
- II. Found a 5/8 in. diam. rebar, firmly set, protruding 3 ins. above the ground, with a yellow plastic cap, stamped "Marquardt 7328 S". No bearing trees found.
- III. Accepted the found rebar, set at the corner point, a 3/4 in. diam. x 30 ins. long aluminum rod, next to the found rebar, 27 ins. in the ground, surrounded by a 1.0 ft. diam. rock collar, with a 3 1/4 in. diam. aluminum cap, mkd. as shown:



from which:

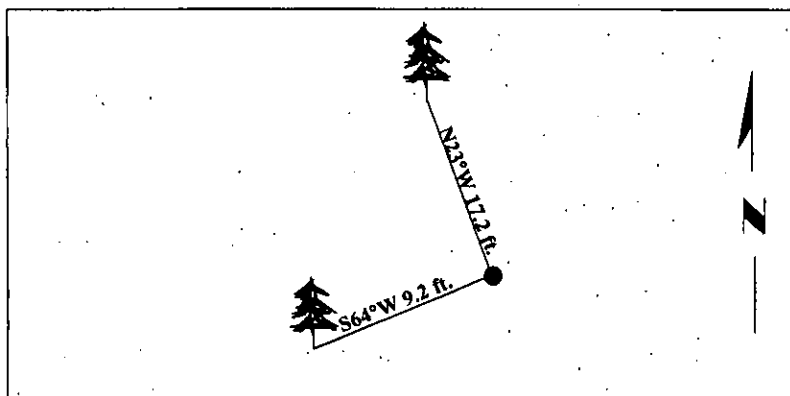
A fir, 13 ins. diam., bears S64°W, 9.2 ft. dist., mkd. "CS 1/16 S26 BT".

A fir, 11 ins. diam., bears N23°W, 17.2 ft. dist., mkd. "X" on snowblaze "BT".

Drove the found rebar flush with the ground, next to the aluminum rod.

Painted bearing trees and attached Land Survey Monument and Bearing Tree signs.

Magnetic Declination: 20° East.



SKETCH OF CORNER

I. Mark Federman

certify the information shown herein is true and correct.

I. Ronald A. Pearson

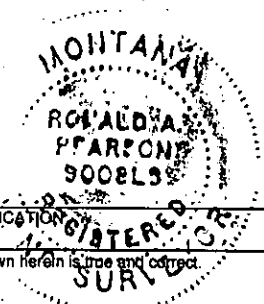
certify that this Corner Record correctly represents work performed by me or under my direction in compliance with the "Corner Recordation Act" (70-22-101, et seq., M.C.A.)

Signature of Surveyor & Seal

Date: 05/05/97

Reg. No.: 9008LS

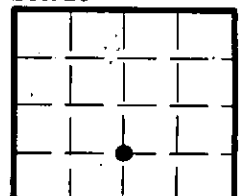
Employer: U.S. FOREST SERVICE



Office of Clerk and Recorder, County of **LINCOLN**. This "corner record" was filed for record on **JULY 31, 1997** was noted on the cross-index plat and is assigned page No. **9829** in book No. **CORAL M. COMMINGS** By **DEB**

County Official

Sec. 26



• - corner this sheet

Cross Index No. U-19 T. 36N R. 27W P.M., MT