

# CERTIFIED CORNER RECORDATION

Corner 1/4 Sec. 35&36 T. 36N R. 27W P.M., MT Lincoln County

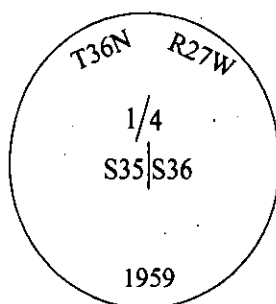
- I. 1893 G.L.O. Original Record by Peter McCardell et. al.: Set a limestone, 14X12X6 ins., 10 ins. in the ground for 1/4 sec. cor. mkd. "1/4" on the W. face.

Established two bearing trees:

A fir, 10 ins. diam., bears S05°30'E, 4 lks. dist., mkd. "1/4 S BT".

A pine, 16 ins. diam., bears S84°E, 74 lks. dist., mkd. "1/4 S BT".

1959-60 B.L.M. Remonumentation Record by David R. Cunningham: the 1/4 sec. cor. of secs. 35 and 36, as determined from one of the original bearing trees. At the corner point, set an iron post, 30 ins. long, 2 1/2 in. diam., 28 ins. in the ground, in concrete, with brass cap mkd. as shown:



Established two new bearing trees:

A fir, 9 ins. diam., bears N47 1/4°E, 31 lks. dist., mkd. "1/4 S36 BT".

A fir, 6 ins. diam., bears N56 3/4°W, 46 lks. dist., mkd. "1/4 S35 BT".

Raise a mound of stone, 2 ft. base, 1 1/2 ft. high, W. of the iron post.

- II. Found a 2 1/2 in. diam. aluminum pipe, firmly set, protruding 2 ins. above the ground, with a B.L.M. brass cap mkd. as shown above. A rock collar, West, 1.0 ft. dist. from the corner.

from which:

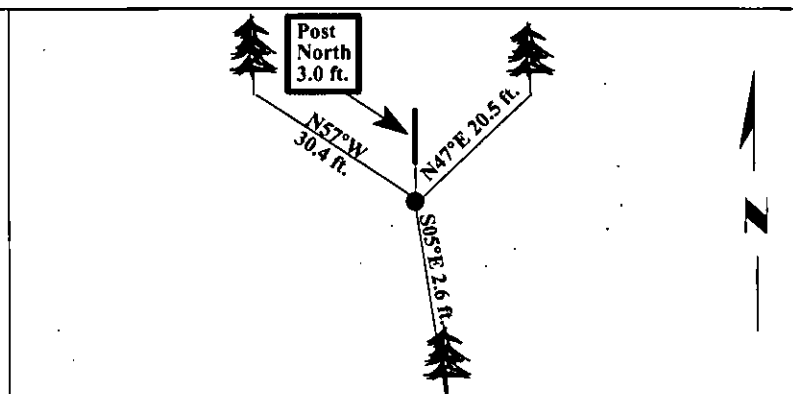
A fir, 12 ins. diam., bears N47°E, 20.5 ft. dist., with a healed face. (BLM-record)

A fir, 17 ins. diam., bears S05°E, 2.6 ft. dist., with visible scribe. (GLO-record)

A fir, 10 ins. diam., bears N57°W, 30.4 ft. dist., with a healed face. (BLM-record)

- III. Set a 6 ft. steel post, North, on property line, 3.0 ft. dist. from the corner, with Land Survey Monument and Property Boundary decals attached.  
Painted bearing trees and attached Land Survey Monument and Bearing Tree signs.

Magnetic Declination: 20° East.



SKETCH OF CORNER

CERTIFICATION 9008LS

I. Mark Federman  
certify the information shown herein is true and correct.

I. Ronald A. Pearson  
certify that this Corner Record correctly represents work performed by me or under my direction in compliance with the Corner Recordation Act (70-22-101, et seq., M.C.A.)

[Signature]  
Signature of Surveyor & Seal

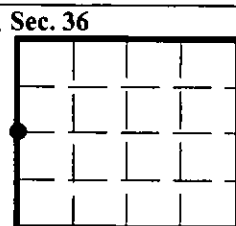
Date: 05/05/97

Reg. No.: 9008LS

Employer: U.S. FOREST SERVICE

Office of Clerk and Recorder, County of LINCOLN. This "corner record" was filed for record on JULY 31, 1997 was noted on the cross-index plat and is assigned page No. 9828 in book No. CORAL M. CUMMINGS By [Signature]

County Official



• - corner this sheet