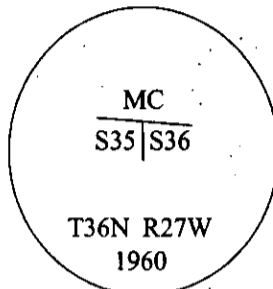


CERTIFIED CORNER RECORDATION

Corner MC Sec. 35&36 T. 36N R. 27W P.M., MT Lincoln County

- I. 1893 G.L.O. Original Record by Peter McCardell et. al.: Set a limestone, 14X12X7 ins., 10 ins. in the ground, for Meander Corner to fractional secs. 35 & 36, mkd. "M.C." on the N. face. Established two bearing trees.

1959-60 B.L.M. Remonumentation Record by David R. Cunningham: The meander corner of secs. 35 & 36, on the S. bank of Alkali Lake, as determined from one of the original bearing trees. At the corner point, set an iron post, 30 ins. long, 2 1/2 in. diam., 28 ins. in the ground, in concrete, with the brass cap mkd. as shown:



Established two new bearing trees:

- A fir, 8 ins. diam., bears S21 1/2°E, 74 lks. dist., mkd. "T36N R27W S36 MC BT".
- A fir, 8 ins. diam., bears S12 1/4°W, 85 lks. dist., mkd. "T36N R27W S35 MC BT".

Raise a mound of stone, 3 ft. base, 2 ft. high, S. of the iron post.

- II. Found a 3 1/2 in. diam. brass cap, firmly set, flush with the ground, mkd. as shown above. A mound of stone, 2.0 ft. diam., S.W. of the corner.

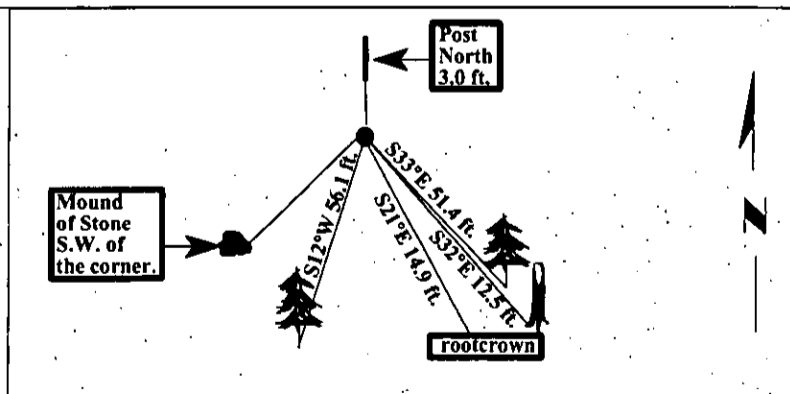
from which:

- A rootcrown, bears S21°E, 14.9 ft. dist. (BLM-record-74 lks.-48.9 ft.)
- A larch snag, 11 ins. diam., bears S32°E, 12.5 ft. dist., mkd. with visible scribe. (GLO-record)
- A fir, 20 ins. diam., bears S12°W, 56.1 ft. dist., mkd. with a healed face. (BLM-record)

- III. Established one new bearing tree and set a 6 ft. steel guard post.
A fir, 12 ins. diam., bears S33°E, 51.4 ft. dist., mkd. "T36N R27W S36 MC BT".
A 6 ft. post, bears North, on property line, 3.0 ft. dist. from the corner.

Painted bearing trees and attached Land Survey Monument and Bearing Tree signs.
Attached Land Survey Monument and Property Boundary decals to the post.

Magnetic Declination: 20° East.



SKETCH OF CORNER

CERTIFICATION

I, Mark Federman
certify the information shown herein is true and correct.

I, Ronald A. Pearson
certify that this Corner Record correctly represents work performed by me or under my direction in compliance with the "Corner Recordation Act" (70-22-101, et seq., M.C.A.)

Signature of Surveyor & Seal

Date: 05/01/97

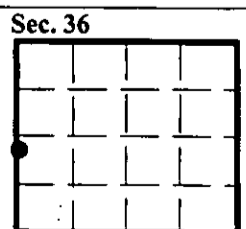
Reg. No.: 9008LS

Employer: U.S. FOREST SERVICE

Office of Clerk and Recorder, County of LINCOLN. This "corner record" was filed for record on JULY 31, 1997 was noted on the cross-index plat and is assigned page No. 9827 in book No. _____

CORAL M. COMMINGS

County Official



• - corner this sheet