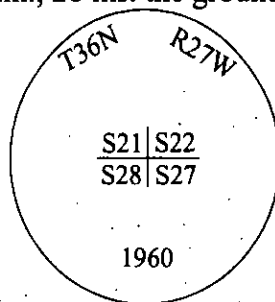


CERTIFIED CORNER RECORDATION

Corner N.W. Sec. 27 T. 36 N R. 27 W P.M., MT Lincoln County
Cor.

- I. 1893 G.L.O. Original Record by Peter McCardell et. al.: Set a limestone, 14x12x8 ins., 10 ins. in the ground, for cor. to secs. 21,22,27&28, mkd. with 2 notches on S. and 3 notches in E. edges. from which:
- A pine, 18 ins. diam., bears N20°E, 84 lks. dist., mkd. "T36N R27W S22 BT".
 - A pine, 28 ins. diam., bears S72°20'E, 63 lks. dist., mkd. "T36N R27W S27 BT".
 - A fir, 8 ins. diam., bears S53°W, 83 lks. dist., mkd. "T36N R27W S28 BT".
 - A larch, 18 ins. diam., bears N41°W, 102 lks. dist., mkd. "T36N R27W S20 BT".
- 1959-60 B.L.M. Remonumentation Record by David R. Cunningham et. al.: The cor. of secs.21,22,27&28, monumented with a limestone, 10x6x6 ins., firmly set, mkd. with 3 grooves on E. and 2 grooves on the S. faces, and witnessed by the remains of two of the original bearing trees. At the corner point, set an iron post, 30 ins. long, 2 1/2 in. diam., 28 ins. the ground, with brass cap mkd. as shown:



Established four new bearing trees:

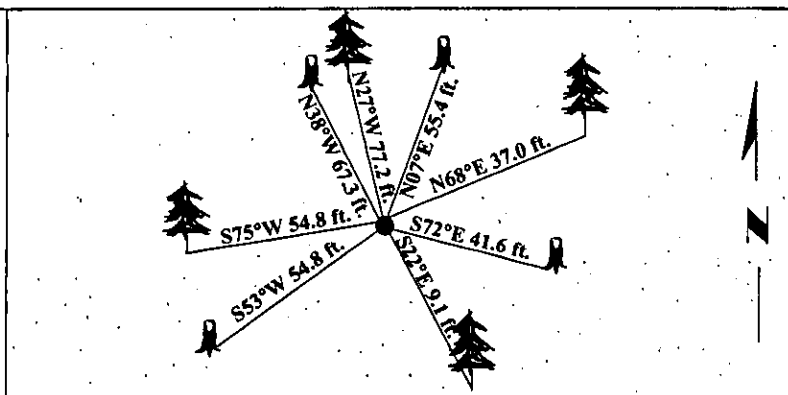
- A fir, 8 ins. diam., bears N68°E, 56 lks. dist., mkd. "T36N R27W S22 BT".
- A fir, 7 ins. diam., bears S22 1/4°E, 13 lks. dist., mkd. "T36N R27W S27 BT".
- A fir, 8 ins. diam., bears S75 1/4°W, 83 lks. dist., mkd. "T36N R27W S28 BT".
- A fir, 10 ins. diam., bears N27 1/4°W, 116 lks. dist., mkd. "T36NR27W S21 BT".

Bury the original stone alongside and raise a mound of stone, 3 ft. base, 2 ft. high, W. of the iron post.

- II. Found a 2 1/2 in. diam. iron pipe, firmly set, protruding 2 ins. above the ground, with a 3 1/4 in. diam. B.L.M brass cap mkd. as shown above. A 3 ft. diam. rock pile, West, 1.0 ft. dist. from the corner. from which:

- A stump, 15 ins. diam., bears N07°E, 55.4 ft. dist., no visible marks. (GLO-record-N20°E)
- A fir, 11 ins. diam., bears N68°E, 37.0 ft. dist., with a healed face. (BLM-record)
- A fir, 15 ins. diam., bears S22°E, 9.1 ft. dist., with a healed face. (BLM-record 13 lks. 8.6 ft.)
- A stump, 24 ins. diam., bears S72°E, 41.6 ft. dist., no visible marks. (GLO-record)
- A rotten stump, bears S53°W, 54.8 ft. dist. (GLO-record)
- A fir, 17 ins. diam., bears S75°W, 54.8 ft. dist., with a healed face. (BLM-record)
- A fir, 15 ins. diam., bears N27°W, 77.2 ft. dist., with a healed face. (BLM-record 76.6 ft.)
- A stump, 18 ins. diam., bears N38°W, 67.3 ft. dist., with a burnt face. (GLO record N40°W)

- III. Painted bearing trees and attached Land Survey Monument and Bearing Tree signs.
Magnetic Declination: 20° East.



SKETCH OF CORNER

CERTIFICATION

I, Mark Federman
certify the information shown herein is true and correct.

I, Ronald A. Pearson
certify that this Corner Record correctly represents work performed by me or under my direction in compliance with the "Corner Recordation Act" (70-22-101, et seq., M.C.A.)

Signature of Surveyor & Seal

Date: 04/23/97

Reg. No.: 9008LS

Employer: U.S. FOREST SERVICE

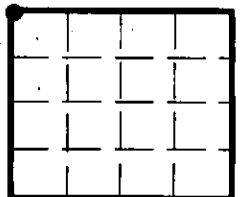
Office of Clerk and Recorder, County of LINCOLN. This "corner record" was filed for record on JULY 31, 1997 was noted on the cross-index plat and is assigned page No. 9821 in book No. CORAL M. CUMMINGS By REB

County Official

Cross Index No. R-13 T. 36N R. 27W P.M., MT

Adopted July 1, 1981, Montana Board of Professional Engineers & Land Surveyors

Sec. 27



• - corner this sheet