

## INSTRUCTIONS

1. Original and/or subsequent record used to evaluate the corner position.
2. Description of evidence found, note discrepancies in the record, state method of establishing lost or obliterated corners.
3. Description of monument and accessories set to perpetuate the corner position.
4. Sketch of corner, show all pertinent data which can best be shown in a sketch example, corner marking, topography ties, position of accessories, etc.
5. Certification must be signed and sealed by Land Surveyor registered in the State of Montana.
6. Fill in Cross Index & Section Diagram at bottom of sheet.

## CERTIFIED CORNER RECORDATION

Corner S 1/4 S 32 only T. 36 N. R. 27 W. P.M.M. Lincoln County

- I. 1893 GLO original record by A. L. Jaqueth et al: Set a post, 3 ft. long, 3 ins. square, 24 ins. in the ground, and two bearing trees.

1903 Retracement of the Fractional N. bdry. by A. L. Rinearson et al: Set a porphyry stone, 20x16x8, 15 ins. in the ground for 1/4 sec. cor. marked on N. face, from which:

A fir, 6 ins. diam, bears N 16 1/4° E, 24 lks. dist., mkd. 1/4 S 32 BT.

A fir, 8 ins. diam., bears S 72° E, 10 lks. dist., mkd. 1/4 S 5 BT.

The old 1/4 sec. cor. which is a post marked and witnessed as described by the surveyor general, I destroy.

1913 Retracement and Resurvey of the Fractional S. Bdry. by L. D. Lyman et al: The fractional resurvey of the S. lines of secs. 31, 34, 35 and 36.

1969 BLM Remonumentation by R. G. Leedy: The 1/4 sec. cor. fo sec. 32, on the S. bdy. of the Tp., monumented with a porphyry stone, 20x16x8 ins., firmly set, mkd. 1/4 on the N. face, and witnessed by the remains of the original bearing trees:

A stump hole, bears N 16 1/4° E, 24 lks. dist.

A stump, bears S 72° E, 10 lks. dist., mkd. 1/4 S 5 BT.

At the corner point

Set an iron post, 30 ins. long, 2 1/2 ins. diam., 24 ins. in the ground, with brass cap mkd.

T36N R27W  
1/4 S 32  
1969

from which

A spruce, 6 ins. diam., bears N 30° E, 32 lks. dist., mkd. 1/4 S32 BT.

A fir, 13 ins. diam., bears S 27 3/4° E, 17 lks. dist., mkd. X BT.

Bury the original stone alongside the iron post.

- II. Found a 2 1/2 in. diam. iron pipe, 6 ins. above ground, firmly set, with a 3 1/4 in. diam. BLM brass cap mkd. as shown above, from which:

A dead spruce, 6 ins. diam., bears N 30° E, 21.1 ft. (32 lks.) dist., mkd. 1/4 S32 BT.

A fir, 19 ins. diam., bears S 27 3/4° E, 11.2 ft. (17 lks.) dist., mkd. X BT.

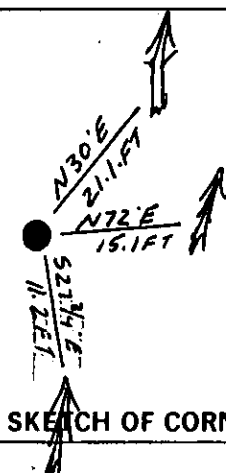
- III. Establish one new bearing tree:

A fir, 6 ins. diam., bears N 72° E, 15.1 ft. dist., mkd. 1/4 S32 BT.

Painted a red band around each bearing tree and attached Land Survey Monument and Bearing Tree signs.

No guard post established.

Magnetic Declination: East, 20°



SKETCH OF CORNER

## CERTIFICATION

Thomas M. Hommel

I, Thomas M. Hommel

certify the information shown herein is true and correct.

Signature of Ground Party Chief

Alvah F. Hughes

I, Alvah F. Hughes

certify that this Corner Record correctly represents work performed by me or under my direction in compliance with the "Corner Recordation Act" (70-22-101 et seq. M.C.A.)

Signature of Surveyor & Seal

Date: 12/30/93 Reg. No. 7322 LS

Employer: U.S. FOREST SERVICE

Office of Clerk and Recorder, County of Lincoln. This "corner record" was filed for record on Jan 12, 1994 was noted on the cross-index plat and is assigned page No. 6093, in book No. Corral M. Cummings & Co. AB

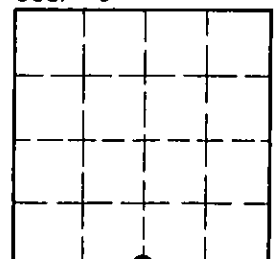
County Official

Z-07

36 N 27 W

Cross Index No.                      T.                      R.                      P.M.M.

Sec. 32



• - corner this sheet