

INSTRUCTIONS

1. Original and/or subsequent record used to evaluate the corner position.
2. Description of evidence found, note discrepancies in the record, state method of establishing lost or obliterated corners.
3. Description of monument and accessories set to perpetuate the corner position.
4. Sketch of corner, show all pertinent data which can best be shown in a sketch example, corner marking, topography ties, position of accessories, etc.
5. Certification must be signed and sealed by Land Surveyor registered in the State of Montana.
6. Fill in Cross Index & Section Diagram at bottom of sheet.

CERTIFIED CORNER RECORDATION

Corner W 1/16, BETWEEN S. 13 & S. 24 T. 36N R. 27W P.M.M. LINCOLN County

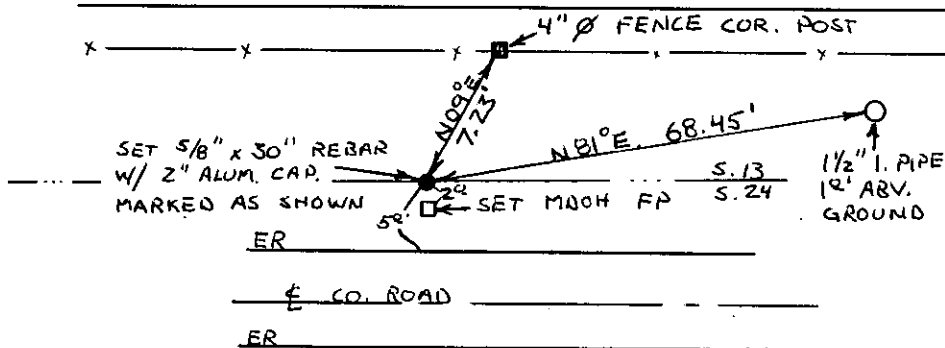
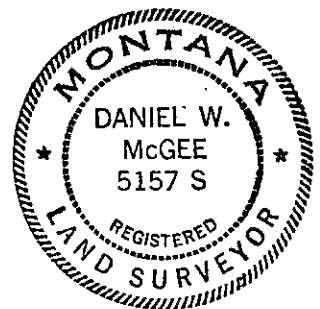
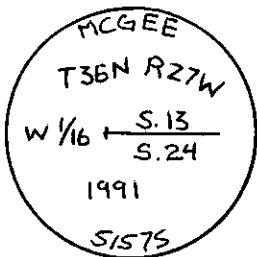
Original Record: None

Subsequent Record: As shown on Certificate of Survey No. 1, a brass cap was set at the 1/16 corner position.

Evidence Found: None. An underground telephone line perhaps destroyed the monument.

Perpetuation: At the proportioned distance between the NW Section Corner of Section 24, and the North 1/4 of Section 24, I set a 5/8" x 30" rebar with a 2" aluminum cap, marked as shown, 30" in the ground, and established the following references:

- 1) a nail 1.0' above ground in a 4" diameter fence corner post bears N.09°E., 7.23 feet. Set MARLS tag.
- 2) a 1 3/4" iron pipe, 1.0' above ground, 3.0' S. of E-W fence bears N.81°E., 68.45'.
- 3) set a MDOH 5 1/2' fence post, 1.0' South of corner.



CERTIFICATION

I, _____
certify the information shown herein is true and correct.

Signature Ground Party Chief

I, DANIEL W. MCGEE
certify that this Corner Record correctly represents work performed by me or under my direction in compliance with the "Corner Recordation Act" (70-22-101, et seq., M.C.A.)

Signature of Surveyor & Seal

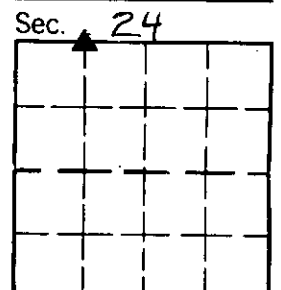
Date: 1/28/92 Reg. No. 5157S

Employer: MCGEE & COMPANY

SKETCH OF CORNER

Office of Clerk and Recorder, County of Lincoln. This "corner record" was filed for record on Jan 11, 1993 was noted on the cross-index plat and is assigned page No. 5258, in book No. _____

Cross Index No. N-22 T. 36N R. 27W PMM



• - corner this sheet