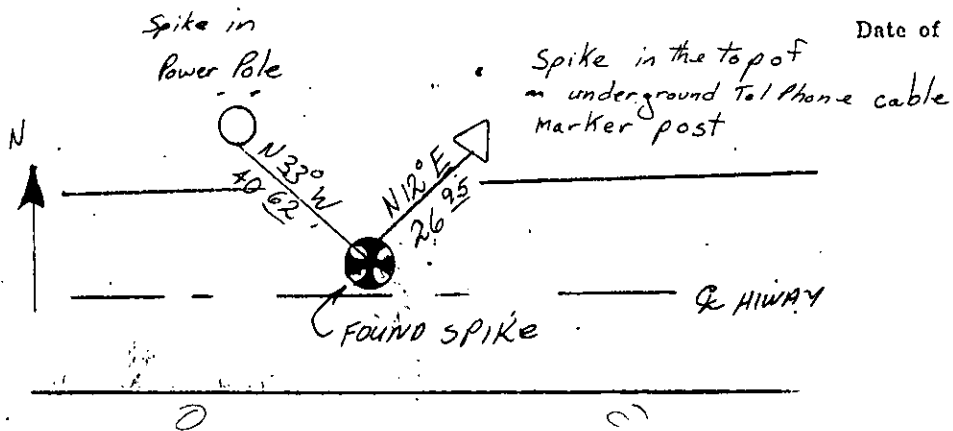


# CERTIFIED LAND CORNER RECORDATION

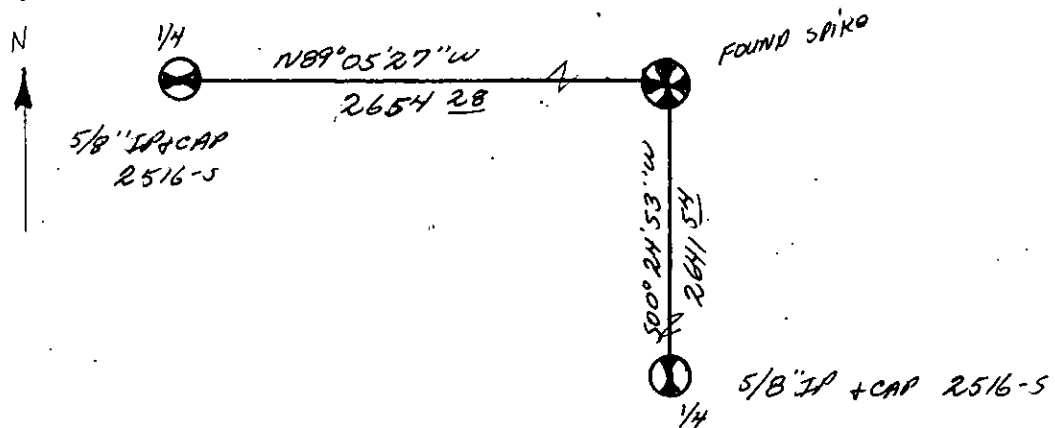
DESCRIPTION OF CORNER EVIDENCE FOUND, AND ORIGINAL RECORD (IF KNOWN)

Fd Spike in pavement in North Lane of highway

DESCRIPTION OF MONUMENT AND ACCESSORIES ESTABLISHED TO PERPETUATE THE ORIGINAL LOCATION OF THIS CORNER:



SKETCH, WITH COURSE AND DISTANCE TO ADJACENT CORNERS IF DETERMINED IN THIS SURVEY. (MAY SKETCH OR PASTE REPRODUCTION ON REVERSE SIDE.)



Surveyor's Seal

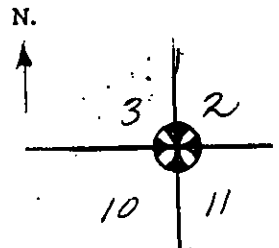
I, \_\_\_\_\_  
certify that the information shown herein is true and correct.

Thomas E. Gandy  
Signature of Ground Party Chief

I, C. W. Doyle  
certify that I have carefully performed or reviewed the work done on the diagrammed corner as reported on this recordation form and approve the same.

C. W. Doyle  
Signature of Surveyor

DIAGRAM OF CORNER:



= Corner recorded on the sheet

2516 S  
Registration Number

Office of Clerk and Recorder, County of Lincoln

This "corner record" was filed for record on the 31st day of January, 1978, was noted on the cross-index plat and is assigned page No. 511 in book No. 1

Release of Township by Betty Lee  
County Official

Cross Index No. E-17 T. 36 N. R. 27 W. Mer.