

CERTIFIED LAND CORNER RECORDATION

SECTION                      TWP 36 N., R. 27 W., M.P.M.

DESCRIPTION OF CORNER EVIDENCE FOUND, AND ORIGINAL RECORD (IF KNOWN)

W  $\frac{1}{4}$  Corner found - Pipe by others 1 B.T.  
SW Corner found Railroad Iron By Others No. B.T.s

DESCRIPTION OF MONUMENT AND ACCESSORIES ESTABLISHED  
TO PERPETUATE THE ORIGINAL LOCATION OF THIS CORNER:

Date of work: Feb. 1976

SEE REVERSE SIDE

SKETCH, WITH COURSE AND DISTANCE TO ADJACENT CORNERS IF DETERMINED IN THIS SURVEY.  
(MAY SKETCH OR PASTE REPRODUCTION ON REVERSE SIDE.)

SEE REVERSE SIDE

Surveyor's Seal

I, Jack H. Ninneman  
certify that the information shown herein is true and  
correct.

*Jack H. Ninneman*  
Signature of Ground Party Chief

I, Jack W. Ninneman  
certify that I have carefully performed or reviewed the  
work done on the diagrammed corner as reported on this  
recording form and approve the same.

*Jack W. Ninneman*  
Signature of Surveyor

DIAGRAM OF CORNER:

N.  
See Reverse  
Side

= Corner recorded on the sheet

534 E.S.

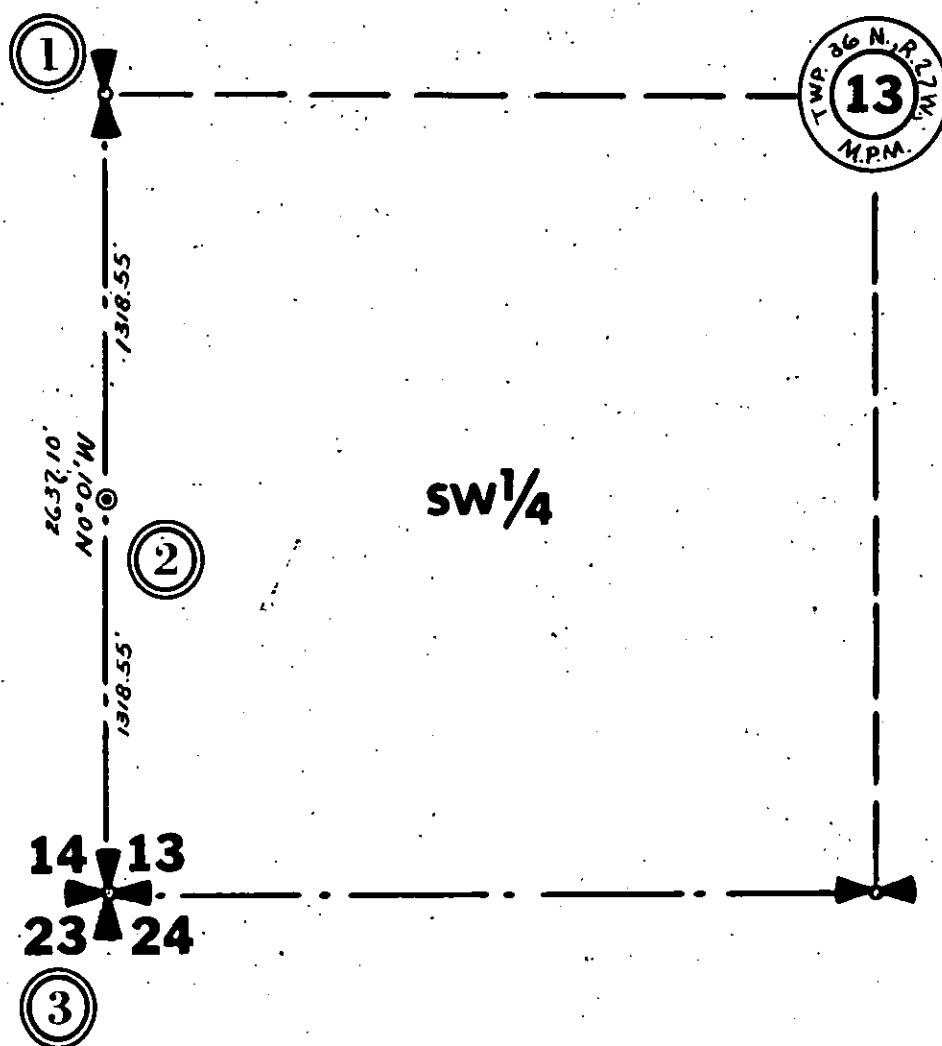
Registration Number

Office of Clerk and Recorder, County of Lincoln

This "corner record" was filed for record on the 9<sup>th</sup> day of June 1976, was noted on the cross-index plat and is  
assigned page No. 476, in book No. 1

*Eleanor Z. Vaughn by Sherry Davis deputy*  
County Official

# TWP. 36 N., R. 27 W.



- (1) Found Pipe By Others - 1 B.T. - 30" Yellow Pine  
Bears S 73° W 13.6 Feet
- (2) Set 1"x24" Steel Rod With Cap Stamped: J.N. 534 E.S.  
No. B.T.s Available - B.C. By D.K.M. 2989 E.S.  
Location Poster East 1.0 Feet In Fence.
- (3) Found Railroad Iron By Others - No. B.T.s