

CERTIFIED LAND CORNER RECORDATION

DESCRIPTION OF CORNER EVIDENCE FOUND, AND ORIGINAL RECORD (IF KNOWN)

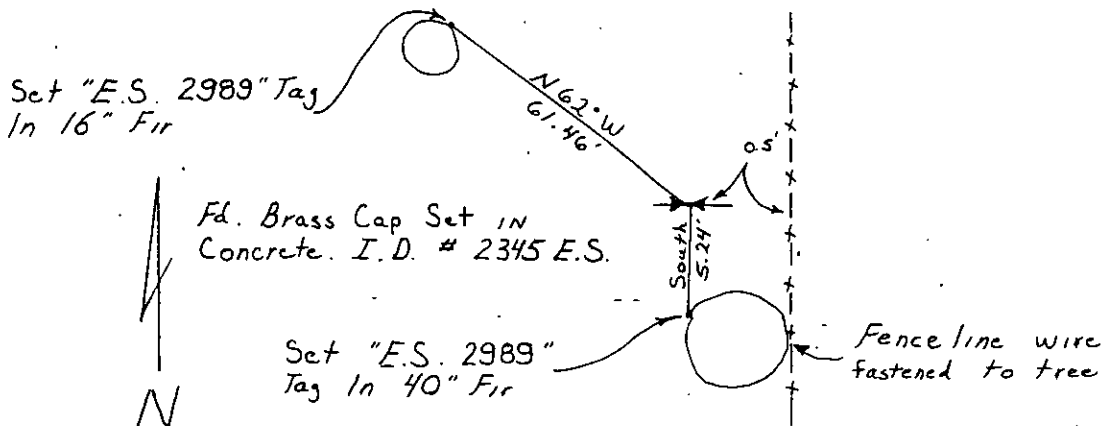
Record: Set limestone, from which:

A66" Alder bears N 78° W 34 links
A 7" Spruce bears S 59° E 32 links

Found: No original evidence found. We found a Brass cap set by "2345 E.S." and accepted it as the corner.

DESCRIPTION OF MONUMENT AND ACCESSORIES ESTABLISHED TO PERPETUATE THE ORIGINAL LOCATION OF THIS CORNER:

Date of work: Nov. 1975



SKETCH, WITH COURSE AND DISTANCE TO ADJACENT CORNERS IF DETERMINED IN THIS SURVEY.
(MAY SKETCH OR PASTE REPRODUCTION ON REVERSE SIDE.)

See Certificate of ASurvey Number 152

Surveyor's Seal

I, S. R. Smith
certify that the information shown herein is true and correct.

S. R. Smith

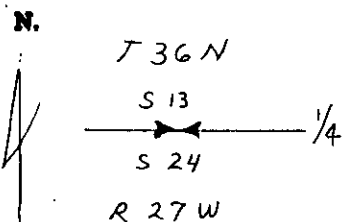
Signature of Ground Party Chief

Dean K. Marquardt

I, _____
certify that I have carefully performed or reviewed the work done on the diagrammed corner as reported on this recordation form and approve the same.

Dean K. Marquardt
Signature of Surveyor

DIAGRAM OF CORNER:



= Corner recorded on the sheet

E. S. 2989

Registration Number

Office of Clerk and Recorder, County of Lincoln

This "corner record" was filed for record on the 28th day of January 1976, was noted on the cross-index plat and is assigned page No. 423, in book No. 1

Charles L. Vaughn Mrs. Watson
County Official Deputy