

CERTIFIED LAND CORNER RECORDATION

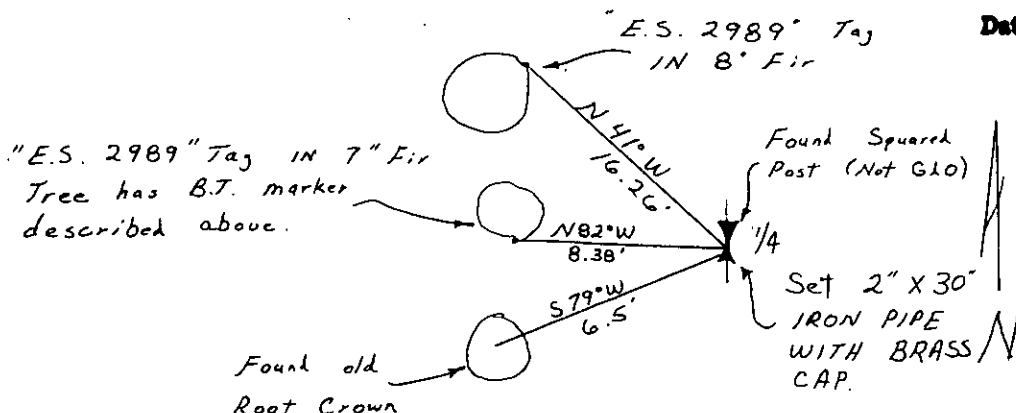
DESCRIPTION OF CORNER EVIDENCE FOUND, AND ORIGINAL RECORD (IF KNOWN)

G.L.O. Record: Set limestone marked 1/4 on West face from which:
 An 8" Fir bears S 85° E 20 links
 An 8" Fir bears S 78° W 9 links

Found: Squared post (not G.L.O.), old B.T. marker on tree facing Southeast:
 "BT 1/4 Cor. 2 1/2 lks. SE" Using marker as an approximate tie, the
 corner falls at the post. From the post we measure S 79° W 6.5'
 and find old root crown. Set brass cap at the base of the squared post.

DESCRIPTION OF MONUMENT AND ACCESSORIES ESTABLISHED TO PERPETUATE THE ORIGINAL LOCATION OF THIS CORNER:

Date of work: Nov. 1975



SKETCH, WITH COURSE AND DISTANCE TO ADJACENT CORNERS IF DETERMINED IN THIS SURVEY.
 (MAY SKETCH OR PASTE REPRODUCTION ON REVERSE SIDE.)

See Certificate of Survey Number 152

Surveyor's Seal

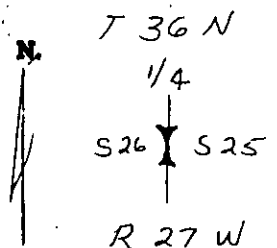
I, S. R. Smith
 certify that the information shown herein is true and correct.

S. R. Smith
 Signature of Ground Party Chief

I, D. K. Marguardt
 certify that I have carefully performed or reviewed the work done on the diagrammed corner as reported on this recordation form and approve the same.

D. K. Marguardt
 Signature of Surveyor

DIAGRAM OF CORNER:



Y = Corner recorded on the sheet

E.S. 2989
 Registration Number

Office of Clerk and Recorder, County of Lincoln

This "corner record" was filed for record on the 28th day of January 1976, was noted on the cross-index plat and is assigned page No. 413, in book No. 1

Charles L. Vaughn, Mac Walters, Deputy
 County Official