

CERTIFIED LAND CORNER RECORDATION

DESCRIPTION OF CORNER EVIDENCE FOUND, AND ORIGINAL RECORD (IF KNOWN)

Not Previously Set

DESCRIPTION OF MONUMENT AND ACCESSORIES ESTABLISHED
TO PERPETUATE THE ORIGINAL LOCATION OF THIS CORNER:

Date of work: Nov. 1975

Set USFS Brass Cap at the proper location for S.W. 1/16 Sec. 25, from which:

A Tamarack 18" diam. bears S 49° E 24.36'

A Tamarack 20" diam. bears N 3° W 6.30'

SKETCH, WITH COURSE AND DISTANCE TO ADJACENT CORNERS IF DETERMINED IN THIS SURVEY.
(MAY SKETCH OR PASTE REPRODUCTION ON REVERSE SIDE.)

See Certificate of Survey No. 181.

Surveyor's Seal

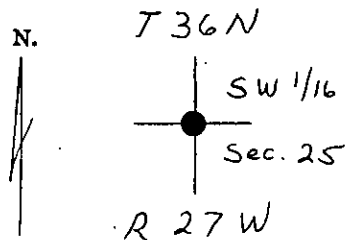
I, S. R. Smith
certify that the information shown herein is true and correct.

S. R. Smith
Signature of Ground Party Chief

I, Dean K. Marquardt
certify that I have carefully performed or reviewed the work done on the diagrammed corner as reported on this recordation form and approve the same.

Dean K. Marquardt
Signature of Surveyor

DIAGRAM OF CORNER:



• = Corner recorded on the sheet

ES2989
Registration Number

Office of Clerk and Recorder, County of Lincoln

This "corner record" was filed for record on the 25th day of January 1976, was noted on the cross-index plat and is

assigned page No. 398, in book No. 1

Eleanor L. Vaughn, Mae Watson Deputy
County Official