

CERTIFIED LAND CORNER RECORDATION

DESCRIPTION OF CORNER EVIDENCE FOUND, AND ORIGINAL RECORD (IF KNOWN)

Not Previously Set

DESCRIPTION OF MONUMENT AND ACCESSORIES ESTABLISHED
TO PERPETUATE THE ORIGINAL LOCATION OF THIS CORNER:

Date of work: Nov. 1975

Set USFS Brass cap at the proper location for CS 1/16 Sec. 25, from which:

A 10" Fir bears N 36° E 12.52'

A 10" Fir bears S 75° E 9.98'

SKETCH, WITH COURSE AND DISTANCE TO ADJACENT CORNERS IF DETERMINED IN THIS SURVEY.
(MAY SKETCH OR PASTE REPRODUCTION ON REVERSE SIDE.)

See Certificate of Survey No. 181.

Surveyor's Seal

S. R. Smith

I, _____
certify that the information shown herein is true and correct.

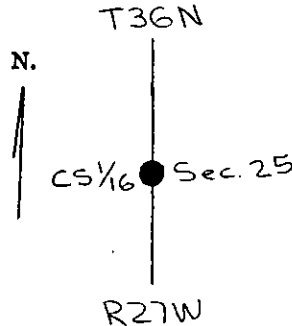
S. R. Smith

Signature of Ground Party Chief

I, Dean K. Marquardt
certify that I have carefully performed or reviewed the work done on the diagrammed corner as reported on this recordation form and approve the same.

Dean K. Marquardt
Signature of Surveyor

DIAGRAM OF CORNER:



ES2989
Registration Number

Office of Clerk and Recorder, County of Lincoln
This "corner record" was filed for record on the 28th day of January 1976, was noted on the cross-index plat and is assigned page No. 395, in book No. 1
Eileen L. Vaughn, By: Mrs. Watson
County Official Deputy