

CERTIFIED LAND CORNER RECORDATION

SEC. 22 TWP. 36 N., R. 27 W., M.P.M.

DESCRIPTION OF CORNER EVIDENCE FOUND, AND ORIGINAL RECORD (IF KNOWN)

N E Corner — S E Corner — S W Corner (not used this survey
W $\frac{1}{4}$ Corner all brass cap monuments set by B.L.M.
E $\frac{1}{4}$ Corner not recovered

DESCRIPTION OF MONUMENT AND ACCESSORIES ESTABLISHED
TO PERPETUATE THE ORIGINAL LOCATION OF THIS CORNER:

Date of work: August, 1975

E $\frac{1}{4}$ Corner - set a $\frac{1}{2}$ "x24" Steel rod with cap stamped J.N. 534 ES
from which a 14" Fir bears N 37° W 60.10 feet and a 10" Fir Bears
N 85° E 76.0' Both scribed and Posted.

At points indicated Set $\frac{1}{2}$ " by 24" Steel rods capped and stamped J.N. 534 ES

SEE DIAGRAM ON REVERSE SIDE

SKETCH, WITH COURSE AND DISTANCE TO ADJACENT CORNERS IF DETERMINED IN THIS SURVEY.
(MAY SKETCH OR PASTE REPRODUCTION ON REVERSE SIDE.)

SEE DIAGRAM ON REVERSE SIDE

Surveyor's Seal

I, Jack H. Ninneman
certify that the information shown herein is true and
correct.

Jack H. Ninneman
Signature of Ground Party Chief

I, Jack W. Ninneman
certify that I have carefully performed or reviewed the
work done on the diagrammed corner as reported on this
recordation form and approve the same.

Jack W. Ninneman
Signature of Surveyor

DIAGRAM OF CORNER:

N.

See reverse
side

= Corner recorded on the sheet

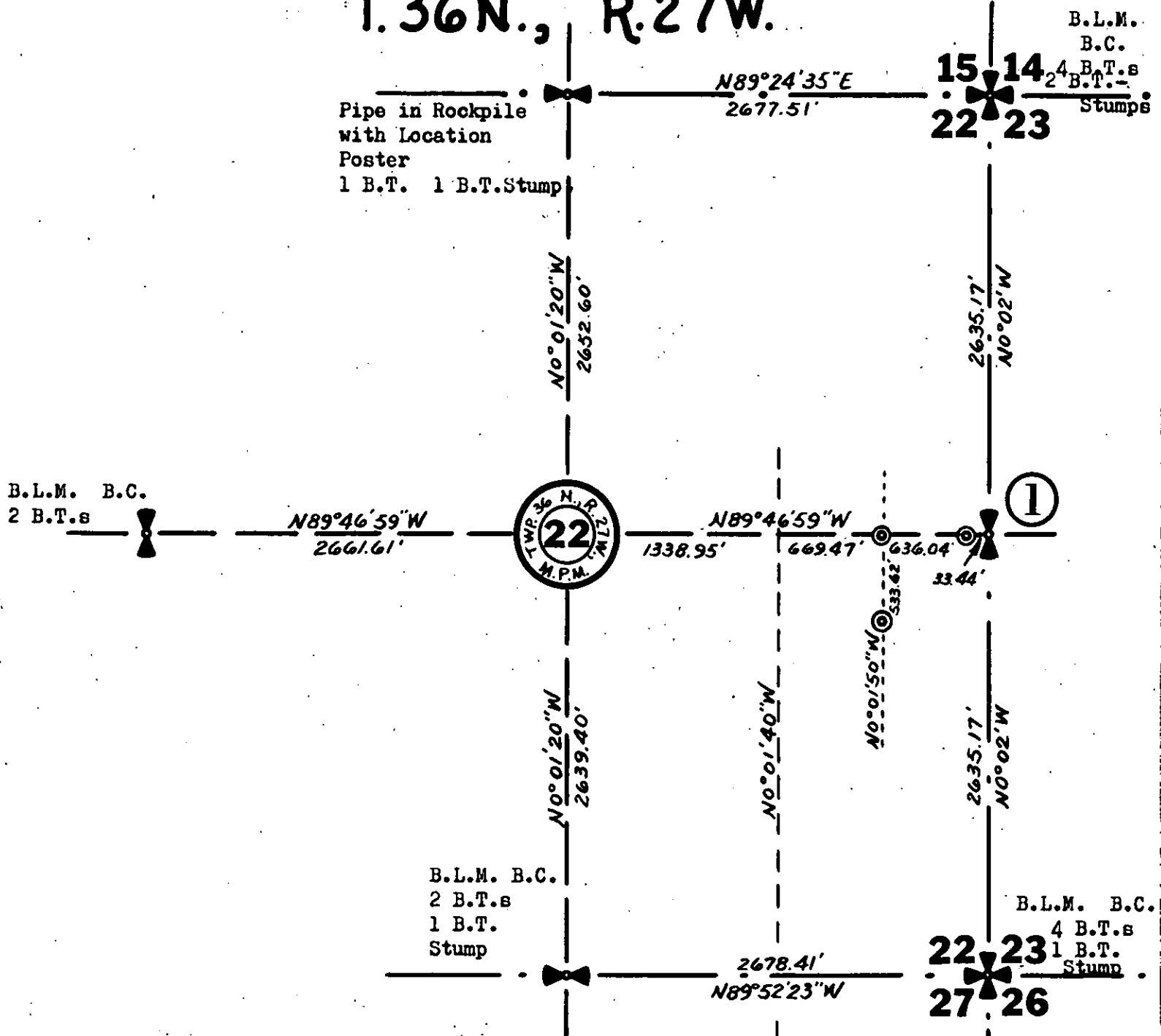
534 E S
Registration Number

Office of Clerk and Recorder, County of Lincoln

This "corner record" was filed for record on the 14th day of October 1975, was noted on the cross-index plat and is
assigned page No. 390, in book No. 1

Charles L. Vaughn, Jr.
County Official

T.36N., R.27W.



- 1. Set A $\frac{1}{2}$ "x24" Steel Rod With Cap Stamped J.N. 534 E.S.
- Set A 14" Fir Bears N 37°W 60.10 Ft. Scribed $\frac{1}{4}$ S 22 & Posted
- Set A 10" Fir Bears N 85°E 76.0 Ft. Scribed $\frac{1}{4}$ S 23 & Posted
- Set At Points Designated (No. B.T.s Scribed or Posted)
- Set $\frac{1}{2}$ "x24" Steel Rods With Caps Stamped J.N. 534 E.S.

(CARVEY ~ VAN HORN ~ EUREKA)