

INSTRUCTIONS

1. Original and/or subsequent record used to evaluate the corner position.
2. Description of evidence found, note discrepancies in the record, state method of establishing lost or obliterated corners.
3. Description of monument and accessories set to perpetuate the corner position.
4. Sketch or corner, show all pertinent data which can best be shown in a sketch example, corner marking, topography ties, position of accessories, etc.
5. Certification must be signed and sealed by Registered Land Surveyor in State of Montana.
6. Fill in Cross Index & Section Diagram at bottom of sheet.

CERTIFIED CORNER RECORDATION

Corner East 1/4 Cor. Section 34 T. 36 N. R. 27 W. P.M.M. Lincoln County

ORIGINAL RECORD G.L.O. 1893

Set a post, 3 ft. long, 3 ins. square, 24 ins. in the ground, for 1/4 Sec. Cor. mkd. 1/4 S. on W. face, from which

A pine, 13 ins. diam., bears N 12° W, 22 lks. dist., mkd. 1-4 S BT.

A pine, 6 ins. diam., bears S 43° 30' E, 36 lks. dist., mkd. 1-4 S BT

B.L.M. REMONUMENTATION 1960

The 1/4 sec. cor. of secs. 34 and 35, as determined from the remains of the original bearing trees.

At the corner point, Set an iron post, 30 ins. long, 2 1/2 ins. dia., 28 ins. in the ground, in concrete, with brass cap mkd.

T36N R27W from which the remains of the original bearing trees:

- 1
4
- A fir, 11 ins. dia., bears S 50 1/2° E, 36 lks. dist., mkd. 1/4 S BT. (Record S 43 1/2° E, 36 lks.)
- A stump, 20 ins. dia., bears N 5 1/2° W, 22 lks. dist., visible marks BT. (record N 12° W, 22 lks.)
- S 34 | S 35
- The new bearing trees:
- 1960 A larch, 6 ins. dia., bears N 54 1/2° E, 19 lks. dist., mkd. 1/4 S 35 BT.
- A larch, 6 ins. dia., bears S 63 1/4° W, 60 lks. dist., mkd. 1/4 S 34 BT.
- Raise a mound of stone, 3 ft. base, 2 ft. high, W. of the iron post.

EVIDENCE FOUND

Found a BLM brass cap, mkd. as shown above, from which:

A fir, 12 ins. dia., bears S 49° E, 23.8 ft. dist., scribing visible. (GLO 1893 BT)

The rotted remains of a stump, bears N 12° W, 14.5 ft. dist. no visible scribing. (GLO 1893 BT)

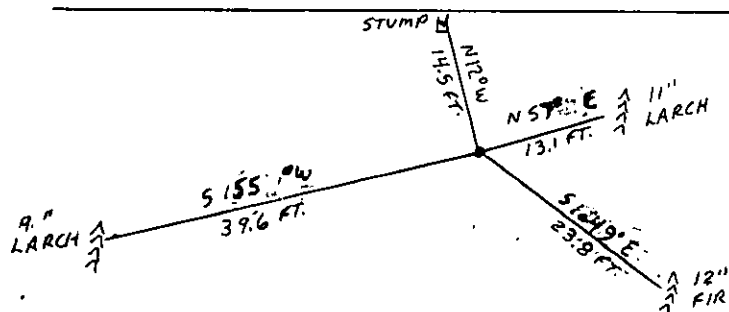
A larch, 19 ins. dia., bears N 57° E, 13.1 ft. dist., mkd. with overgrown blaze. (BLM 1960 BT)

A larch, 11 ins. dia., bears S 55° W, 39.6 ft. dist., mkd. with overgrown blaze. (BLM 1960 BT)

Mound of stone W. of the iron post.

CORNER PERPETUATION

Set a galvanized steel post with a Survey Marker decal, 3 ft. South of the brass cap. Painted red bands around the bearing trees and painted the scribing and blazing. Attached bearing tree signs and Land Survey Monument signs.



CERTIFICATION

I, _____
certify the information shown herein is true and correct.

Signature Ground Party Chief

Philip A. Helps

I, _____
certify that this Corner Record correctly represents work performed by me or under my direction in compliance with the "Corner Recordation Act" (70-22-101, et seq., M.D.A.)

Signature of Surveyor & Seal

Date: 10/87 Reg. No. 4739 S

Employer: F & H Land Surveying, Whitefish

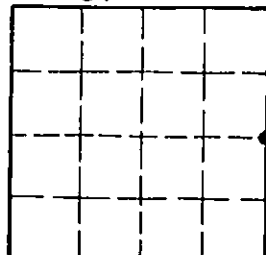
DECL. 21° E SKETCH OF CORNER

Office of Clerk and Recorder, County of Lincoln. This "corner record" was filed for record on the Nov. 30 day of 1987, was noted on the cross-index plat and is assigned page No. 3725, in book No. _____

Janet B. Sigel by Bill Buschhoff
County Official

Cross Index No. X - 17 T. 36 N R. 27 W P.M.M.

Sec. 34



• - corner this sheet