

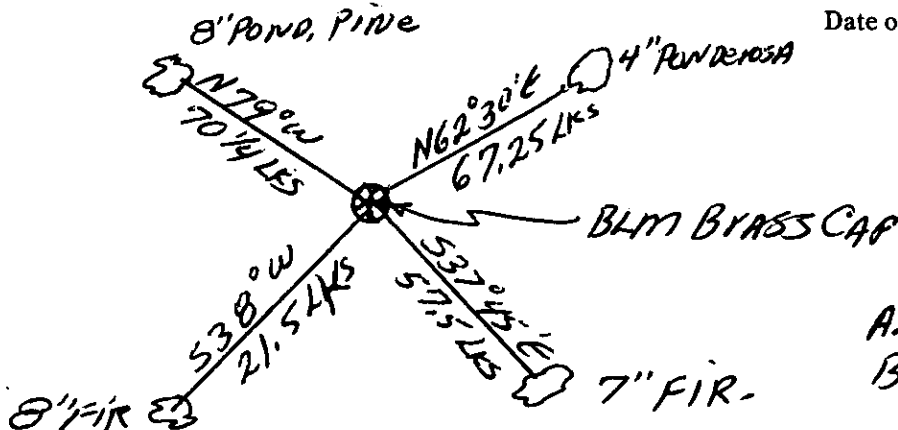
CERTIFIED LAND CORNER RECORDATION

DESCRIPTION OF CORNER EVIDENCE FOUND, AND ORIGINAL RECORD (IF KNOWN)

FND BLM BRASS CAP "1959"

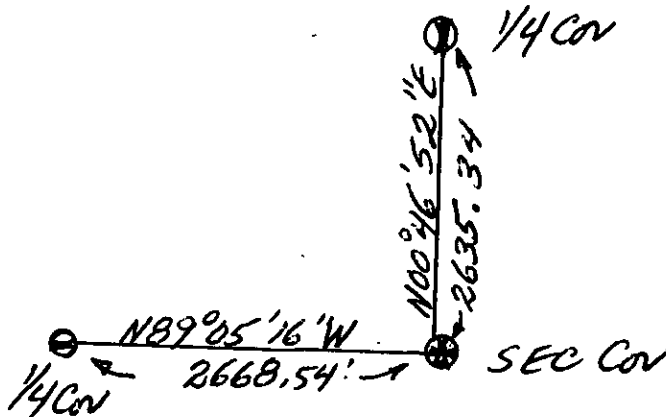
DESCRIPTION OF MONUMENT AND ACCESSORIES ESTABLISHED TO PERPETUATE THE ORIGINAL LOCATION OF THIS CORNER:

Date of work: 5/1/84



ALL BT'S SCRIBED BY BLM

SKETCH, WITH COURSE AND DISTANCE TO ADJACENT CORNERS IF DETERMINED IN THIS SURVEY. (MAY SKETCH OR PASTE REPRODUCTION ON REVERSE SIDE.)



Surveyor's Seal

I, THOMAS E. SANDS
certify that the information shown herein is true and correct.

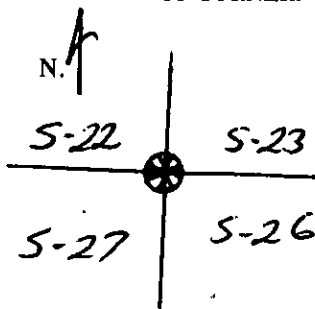
Thomas E. Sands
Signature of Ground Party Chief

I, C. W. DOYLE
certify that I have carefully performed or reviewed the work done on the diagrammed corner as reported on this recordation form and approve the same.

C. W. Doyle
Signature of Surveyor

2516-5
Registration Number

DIAGRAM OF CORNER:



● = Corner recorded on the sheet

Office of Clerk and Recorder, County of Lincoln

This "corner record" was filed for record on the 18th day of May, 1984, was noted on the cross-index plat and is assigned page No. 2614, in book No. Janet B. F. Liegel by Betty Conces

County Official deputy

Cross Index No. 36N T 27W Mer.