

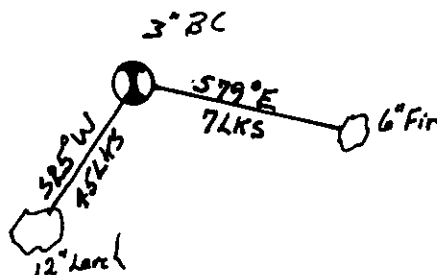
CERTIFIED LAND CORNER RECORDATION

DESCRIPTION OF CORNER EVIDENCE FOUND, AND ORIGINAL RECORD (IF KNOWN)

Fd 3" B.C. 63 USFS

DESCRIPTION OF MONUMENT AND ACCESSORIES ESTABLISHED
TO PERPETUATE THE ORIGINAL LOCATION OF THIS CORNER:

Date of work: 8/81



SKETCH, WITH COURSE AND DISTANCE TO ADJACENT CORNERS IF DETERMINED IN THIS SURVEY.
(MAY SKETCH OR PASTE REPRODUCTION ON REVERSE SIDE.)



See Reverse Side

DIAGRAM OF CORNER:

Surveyor's Seal

I, Bryan Block
certify that the information shown herein is true and correct.

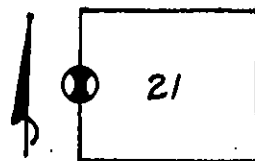
Bryan Block
Signature of Ground Party Chief

I, C.W. DOYLE
certify that I have carefully performed or reviewed the work
done on the diagrammed corner as reported on this recordation
form and approve the same.

C.W. Doyle
Signature of Surveyor

2516-S
Registration Number

N.



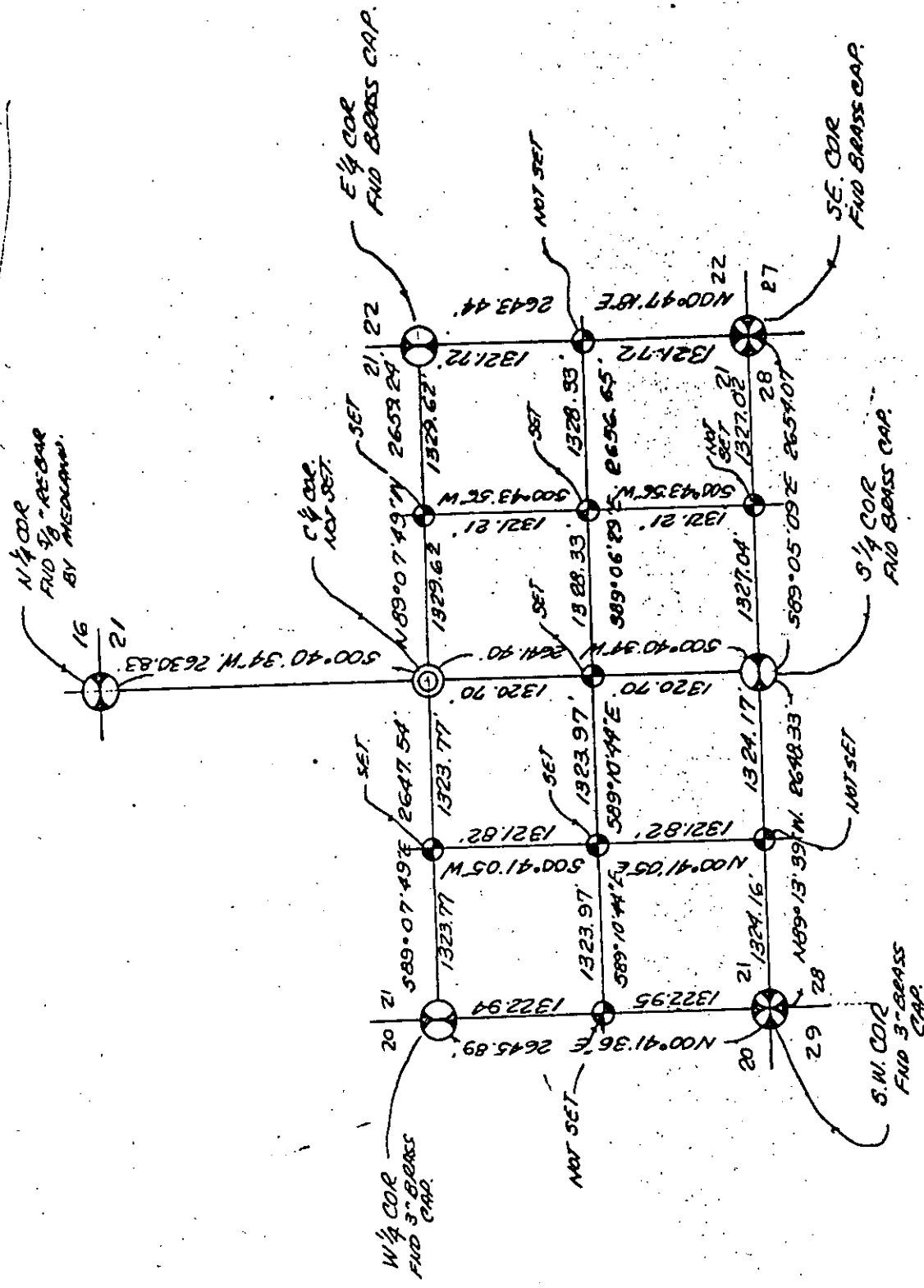
① = Corner recorded on the sheet
W 1/4 Sec 21

Office of Clerk and Recorder, County of Lincoln

This "corner record" was filed for record on the 18th day of May, 1984, was noted on the cross-index plat and is
assigned page No. 2613, in book No. _____

Conet BF Siegel by Betty Conces deputy
County Official

Cross Index No. _____ T 36 N R 27 W Mer.



SECTION SUB-DIVISION INFO.
SCALE NONE

1/4 COR