

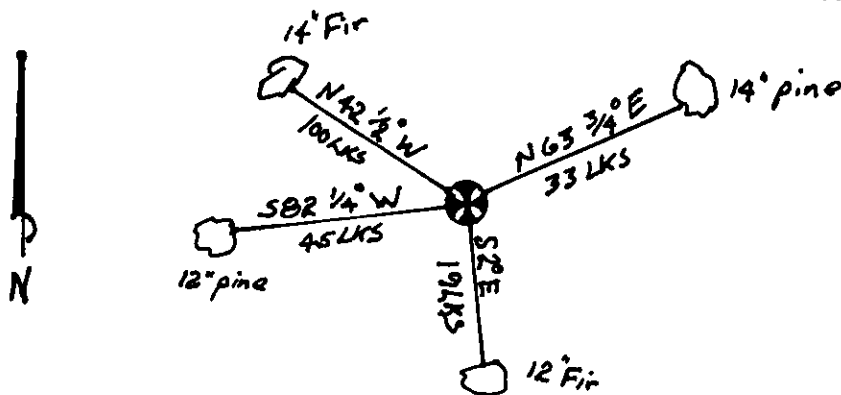
CERTIFIED LAND CORNER RECORDATION

DESCRIPTION OF CORNER EVIDENCE FOUND, AND ORIGINAL RECORD (IF KNOWN)

FD 3" BC by USFS

DESCRIPTION OF MONUMENT AND ACCESSORIES ESTABLISHED TO PERPETUATE THE ORIGINAL LOCATION OF THIS CORNER:

Date of work: 8/81



SKETCH, WITH COURSE AND DISTANCE TO ADJACENT CORNERS IF DETERMINED IN THIS SURVEY. (MAY SKETCH OR PASTE REPRODUCTION ON REVERSE SIDE.)

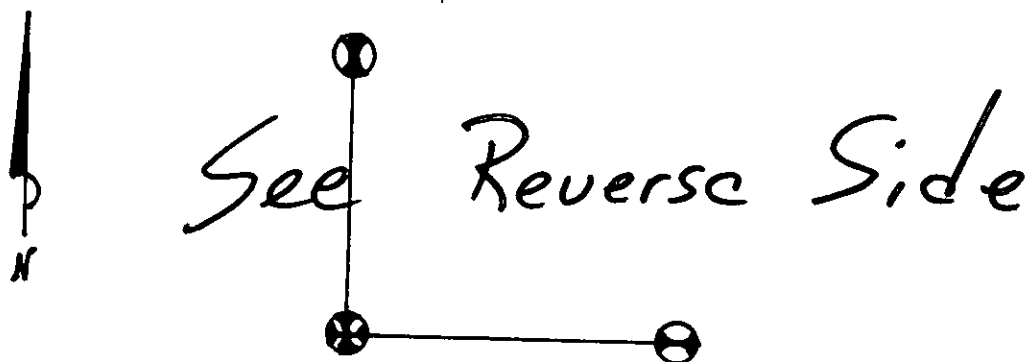


DIAGRAM OF CORNER:

Surveyor's Seal

I, Bryan Block
certify that the information shown herein is true and correct.

Signature of Ground Party Chief

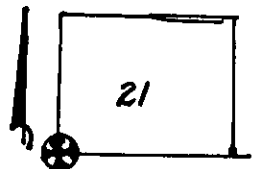
I, C. W. Doyle
certify that I have carefully performed or reviewed the work done on the diagrammed corner as reported on this recordation form and approve the same.

Signature of Surveyor

2516-S

Registration Number

N.



⊗ = Corner recorded on the sheet

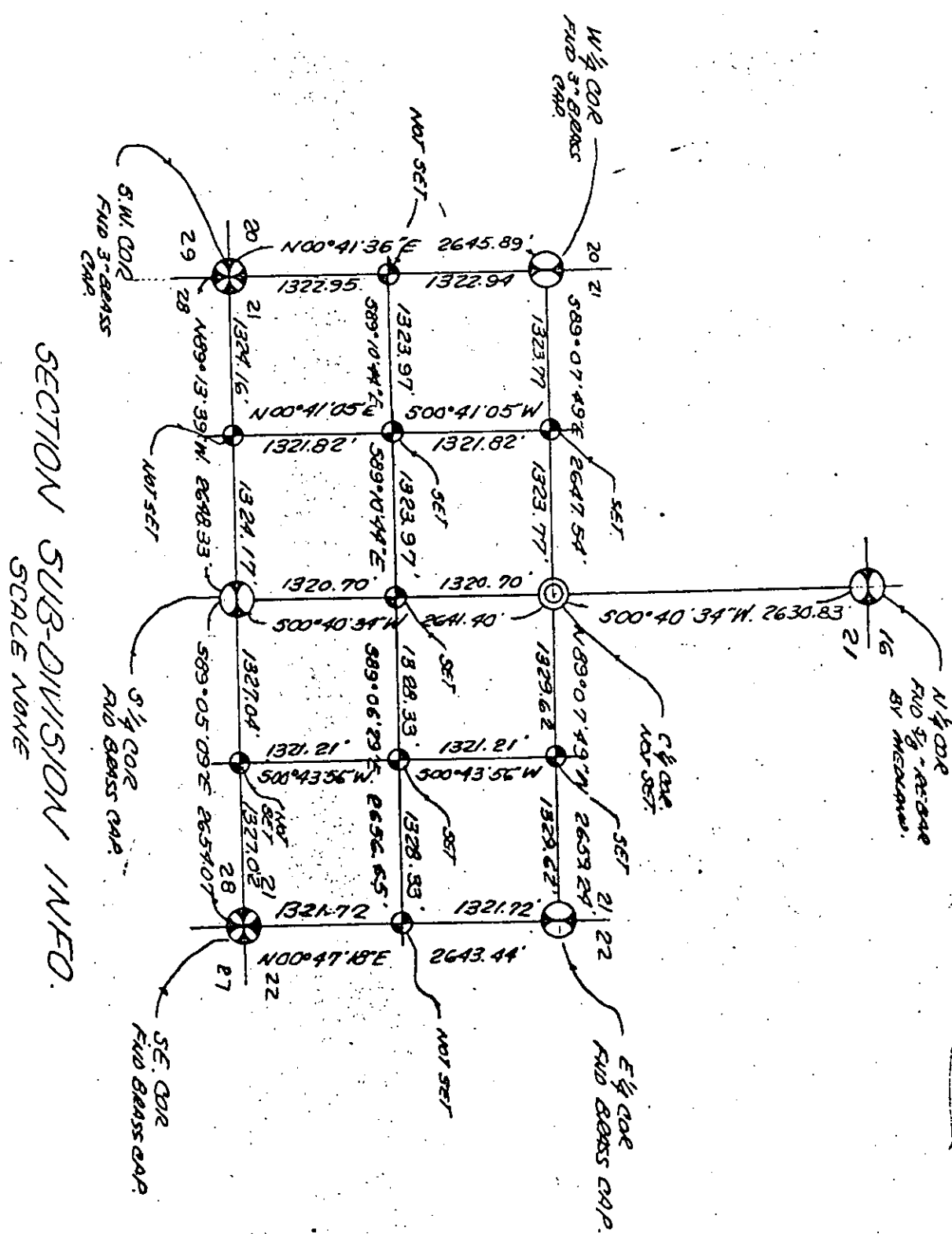
SW Sec 21

Office of Clerk and Recorder, County of Lincoln

This "corner record" was filed for record on the 18th day of May, 1984, was noted on the cross-index plat and is assigned page No. 2612, in book No. _____.

Janet BF Siegel by Betty Conner, deputy
County Official

Cross Index No. _____ T 36 N R 27 W Mer.



SECTION SUB-DIVISION INFO.
SCALE NONE

SCALE NAME

1/4 cor.