

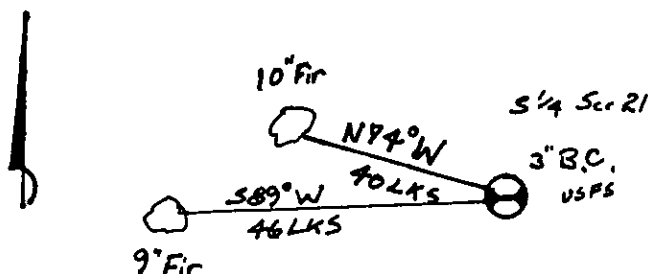
CERTIFIED LAND CORNER RECORDATION

DESCRIPTION OF CORNER EVIDENCE FOUND, AND ORIGINAL RECORD (IF KNOWN)

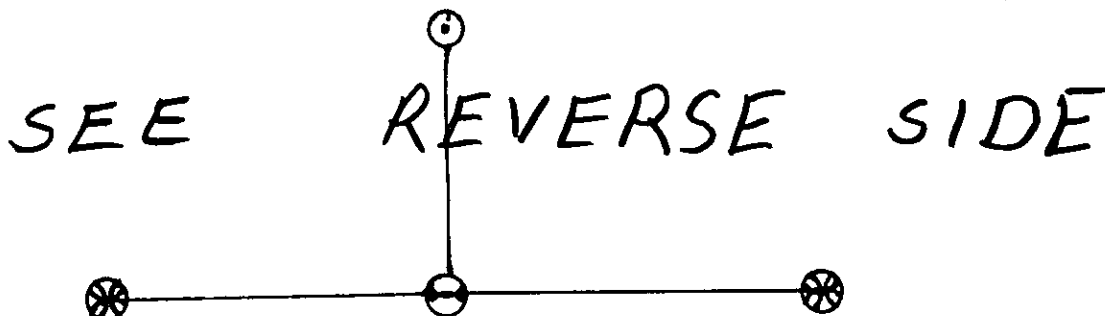
FD3" B.C. by USFS

DESCRIPTION OF MONUMENT AND ACCESSORIES ESTABLISHED  
TO PERPETUATE THE ORIGINAL LOCATION OF THIS CORNER:

Date of work: 8-81



SKETCH, WITH COURSE AND DISTANCE TO ADJACENT CORNERS IF DETERMINED IN THIS SURVEY.  
(MAY SKETCH OR PASTE REPRODUCTION ON REVERSE SIDE.)



Surveyor's Seal

I, Bryan Block  
certify that the information shown herein is true and correct.

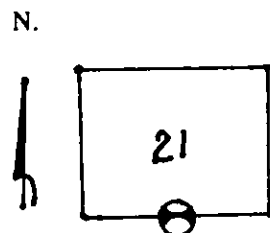
Bryan Block  
Signature of Ground Party Chief

I, C. W. DOYLE  
certify that I have carefully performed or reviewed the work  
done on the diagrammed corner as reported on this recordation  
form and approve the same.

C. W. Doyle  
Signature of Surveyor

2516-5  
Registration Number

DIAGRAM OF CORNER:



⊙ = Corner recorded on the sheet  
S 1/4 21-36-27

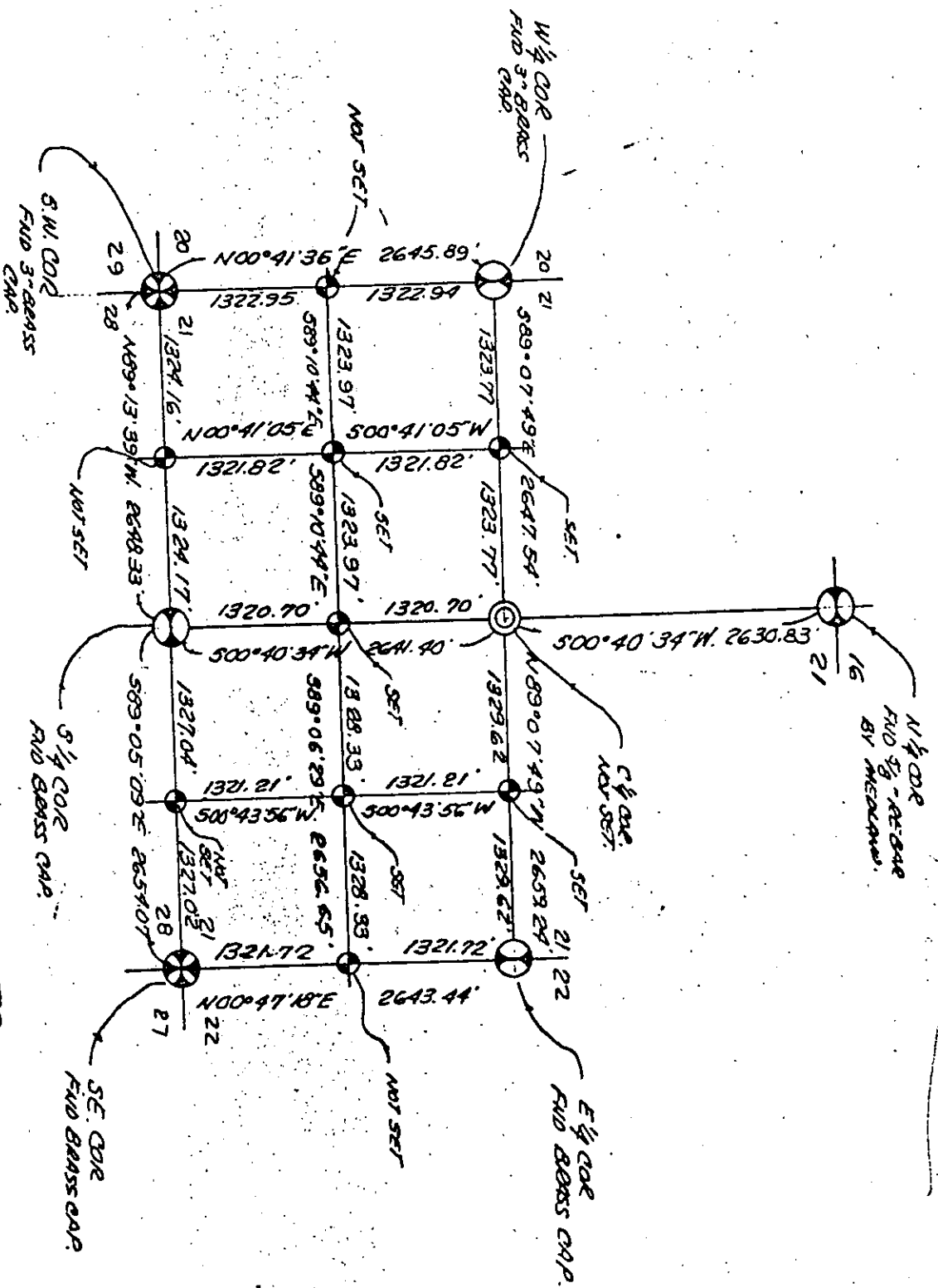
Office of Clerk and Recorder, County of Lincoln

This "corner record" was filed for record on the 18<sup>th</sup> day of May 1984, was noted on the cross-index plat and is  
assigned page No. 2611, in book No. \_\_\_\_\_

Janet BF Siegel by Betty Conner deputy  
County Official

Cross Index No. \_\_\_\_\_ T 36 N R 27 W Mer.

SECTION SUB-DIVISION INFO.  
SCALE NONE



W 1/4 COR