

## INSTRUCTIONS

1. Original and/or subsequent record used to evaluate the corner position.
2. Description of evidence found, note discrepancies in the record, state method of establishing lost or obliterated corners.
3. Description of monument and accessories set to perpetuate the corner position.
4. Sketch or corner, show all pertinent data which can best be shown in a sketch example, corner marking, topography ties, position of accessories, etc.
5. Certification must be signed and sealed by Registered Land Surveyor in State of Montana.
6. Fill in Cross Index & Section Diagram at bottom of sheet.

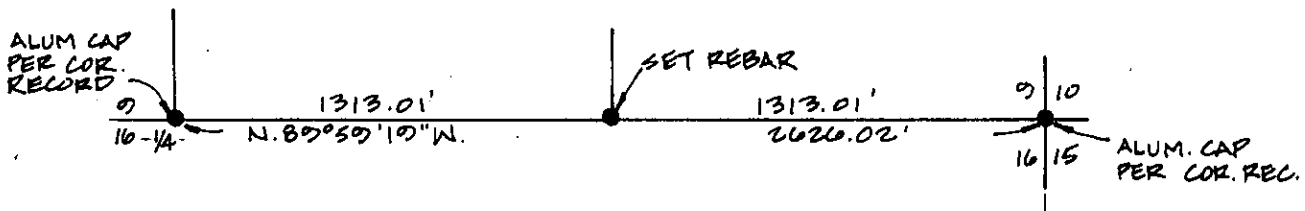
## CERTIFIED CORNER RECORDATION

Corner E. 1/4 COR. BETWEEN SEC. 9 & 16 T. 36 N R. 27 W. P.M.M. LINCOLN County

NOTHING FOUND.

SEE CERTIFICATE OF SURVEY No. 669 FOR ADJACENT CORNERS.

SET 5/8" x 24" REBAR WITH PLASTIC CAP STAMPED 2989 E.S.



5/8" REBAR WITH  
PLASTIC CAP  
STAMPED 2989 E.S.

MARQUARDT  
2989 E.S.

## CERTIFICATION

I, \_\_\_\_\_  
certify the information shown herein is true and correct.

Signature Ground Party Chief

I, D. K. MARQUARDT

certify that this Corner Record correctly represents work performed  
by me or under my direction in compliance with the "Corner  
Recordation Act" (70-22-101, et seq., M.D.A.)

D. K. Marquardt  
Signature of Surveyor & Seal

Date: 10/7/81 Reg. No. 2989 E.S.

Employer: \_\_\_\_\_

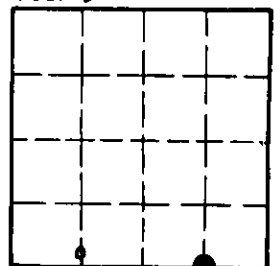
## SKETCH OF CORNER

Office of Clerk and Recorder, County of Lincoln. This "corner  
record" was filed for record on the February 17<sup>th</sup> day of 1982  
was noted on the cross-index plat and is assigned page No. 1540, in  
book No. 1

Eleanor L. Vaughn by Betty L. Conces  
County Official deputy

Cross Index No. J-12 T. 36 N R. 27 W P.M.M.

Sec. 9



● - corner this sheet