

INSTRUCTIONS

1. Original and/or subsequent record used to evaluate the corner position.
2. Description of evidence found, note discrepancies in the record, state method of establishing lost or obliterated corners.
3. Description of monument and accessories set to perpetuate the corner position.
4. Sketch or corner, show all pertinent data which can best be shown in a sketch example, corner marking, topography lies, position of accessories, etc.
5. Certification must be signed and sealed by Registered Land Surveyor in State of Montana.
6. Fill in Cross Index & Section Diagram at bottom of sheet.

CERTIFIED CORNER RECORDATION

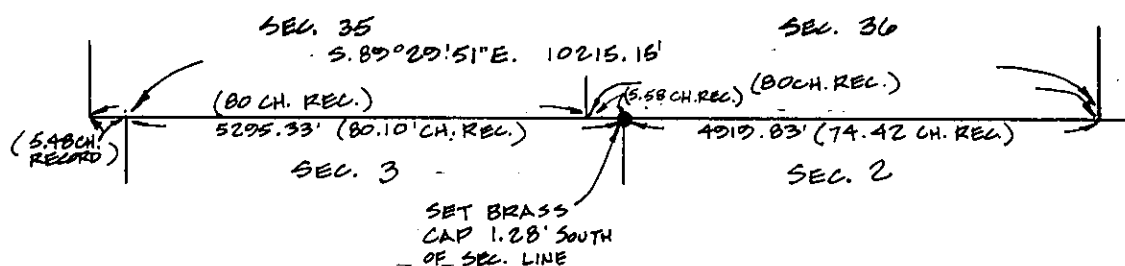
Corner Closing Corner between Sec 2 & 3 T. 36N R. 27W P.M.M. Lincoln County

Record: Set a limestone 20x6x6 ins. 15 ins. in the ground.

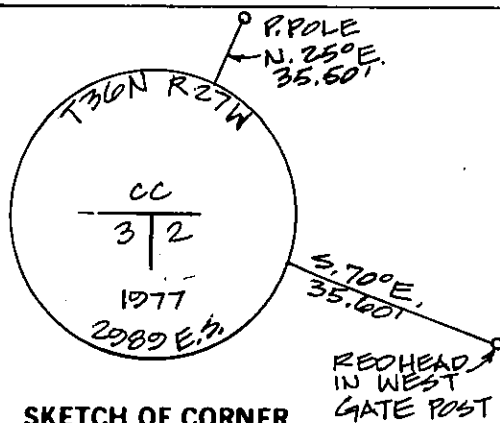
Dug pits for Rms.

NO EVIDENCE OF ORIGINAL CORNER FOUND.

SET BRASS CAP BY SINGLE PROPORTION



Brass cap is 1.28' South of section line



SKETCH OF CORNER

CERTIFICATION

I, _____ certify the information shown herein is true and correct.

Signature Ground Party Chief

I, D.K. Maguardt certify that this Corner Record correctly represents work performed by me or under my direction in compliance with the "Corner Recordation Act" (70-22-101, et seq., M.D.A.)

Signature of Surveyor & Seal

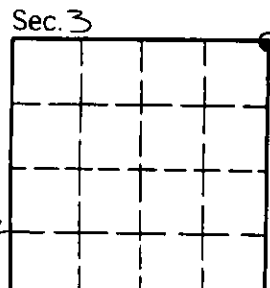
Date: 7-8-81 Reg. No. 2289ES

Employer: _____

Office of Clerk and Recorder, County of Lincoln. This "corner record" was filed for record on the February 17th day of 1981 was noted on the cross-index plat and is assigned page No. 1536, in book No. 1

Eleanor L. Vaughn by Betty L. Conces
County Official deputy

Cross Index No. A-17 T. 36N R. 27W PMM



• corner this sheet