

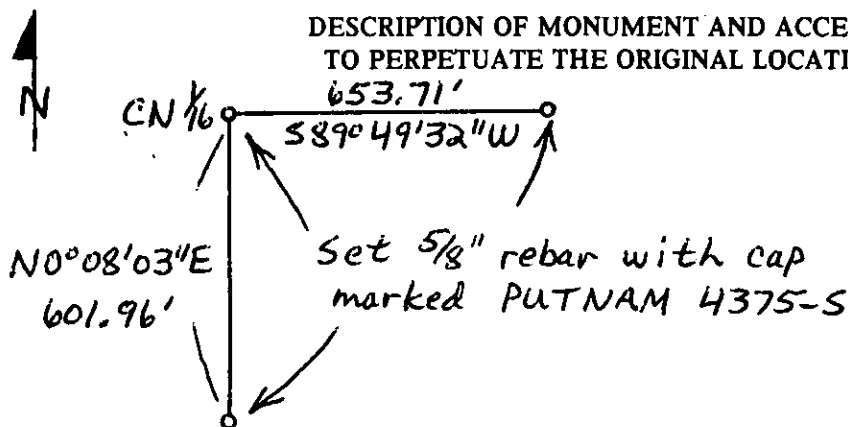
# CERTIFIED LAND CORNER RECORDATION

## DESCRIPTION OF CORNER EVIDENCE FOUND, AND ORIGINAL RECORD (IF KNOWN)

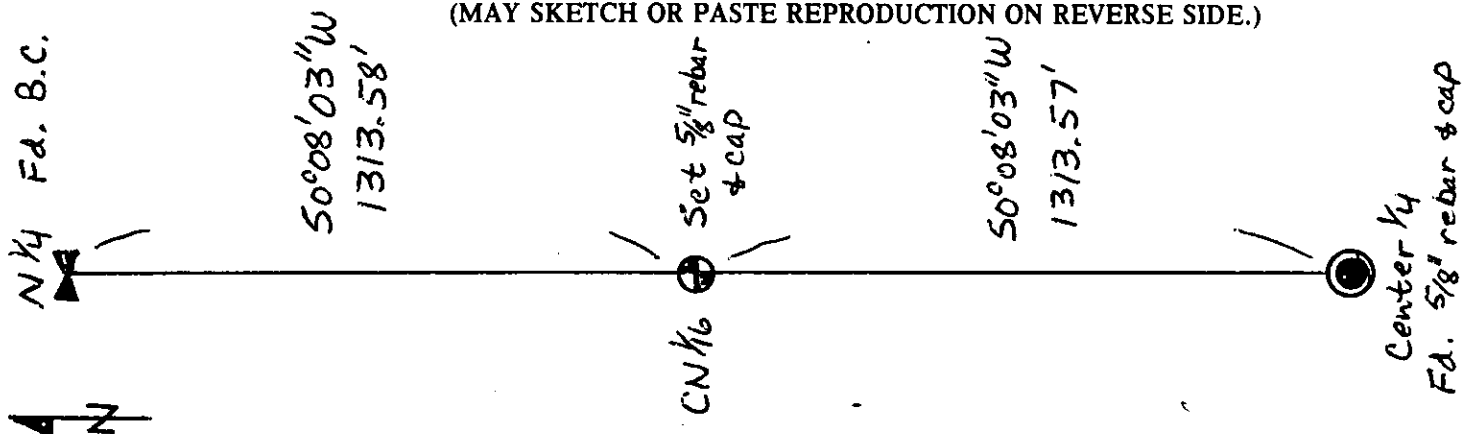
No corner evidence found or original recordation information found, as this corner is a  $\frac{1}{16}$  corner.

### DESCRIPTION OF MONUMENT AND ACCESSORIES ESTABLISHED TO PERPETUATE THE ORIGINAL LOCATION OF THIS CORNER:

Date of work: Sept. 1980



### SKETCH, WITH COURSE AND DISTANCE TO ADJACENT CORNERS IF DETERMINED IN THIS SURVEY. (MAY SKETCH OR PASTE REPRODUCTION ON REVERSE SIDE.)



Surveyor's Seal

I, Ralph Putnam  
certify that the information shown herein is true and correct.

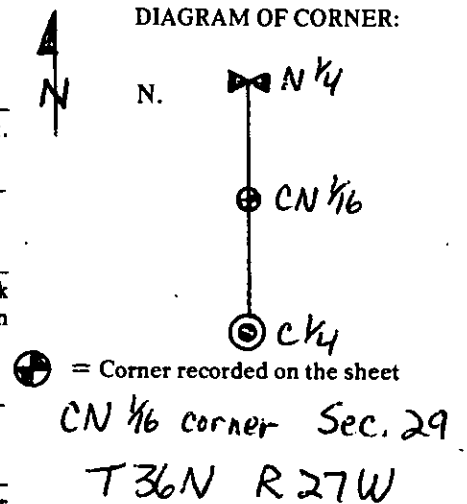
Ralph Putnam  
Signature of Ground Party Chief

I, \_\_\_\_\_  
certify that I have carefully performed or reviewed the work done on the diagrammed corner as reported on this recordation form and approve the same.

Albert H. Putnam  
Signature of Surveyor

4375-S  
Registration Number

### DIAGRAM OF CORNER:



Office of Clerk and Recorder, County of Lincoln

This "corner record" was filed for record on the 6th day of August 1981, was noted on the cross-index plat and is assigned page No. 1177, in book No. 1.

Kleanor L. Vaughn  
County Official

Betty B. Bely  
Deputy

Cross Index No. S-7 T 36 R 27 Mer.