

INSTRUCTIONS

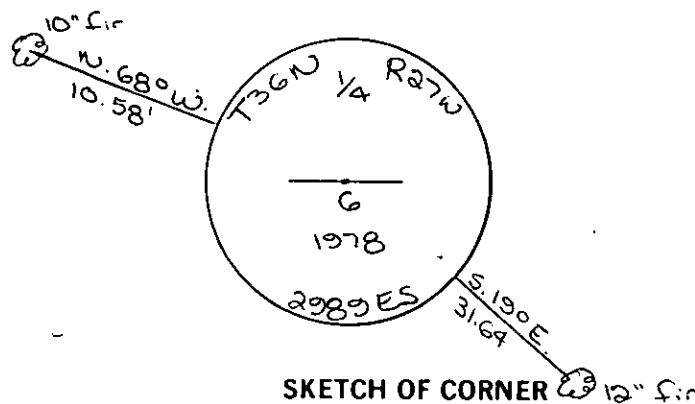
1. Original and/or subsequent record used to evaluate the corner position.
2. Description of evidence found, note discrepancies in the record, state method of establishing lost or obliterated corners.
3. Description of monument and accessories set to perpetuate the corner position.
4. Sketch or corner, show all pertinent data which can best be shown in a sketch example, corner marking, topography ties, position of accessories, etc.
5. Certification must be signed and sealed by Registered Land Surveyor in State of Montana.
6. Fill in Cross Index & Section Diagram at bottom of sheet.

CERTIFIED CORNER RECORDATION

Corner North 1/4 corner Sec. 6 T. 36N R. 27W P.M.M. Lincoln County

Corner not previously set

Set brass cap by single proportion. See C. of S. No 541 for adjacent corners



CERTIFICATION

I, _____
certify the information shown herein is true and correct.

Signature Ground Party Chief

I, D.K. Marquardt

certify that this Corner Record correctly represents work performed by me or under my direction in compliance with the "Corner Recordation Act" (70-22-101), et seq., M.D.A.

D.K. Marquardt
Signature of Surveyor & Seal

Date: 7-6-81 Reg. No. 2289 ES

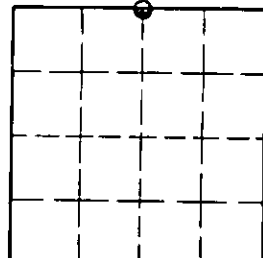
Employer: _____

Office of Clerk and Recorder, County of Lincoln. This "corner record" was filed for record on the 17th day of July 1981 was noted on the cross-index plat and is assigned page No. 1157 in book No. 1

Charles L. Vaughn, Jr.
County Official
Betty Beel
Deputy

Cross Index No. A-3 T. 36N R. 27W P.M.M.

Sec. 6



● - corner this sheet