

INSTRUCTIONS

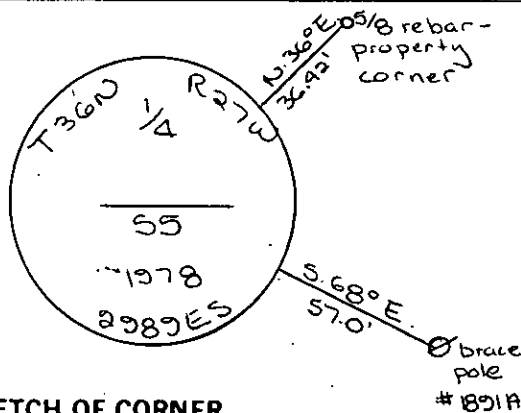
1. Original and/or subsequent record used to evaluate the corner position.
2. Description of evidence found, note discrepancies in the record, state method of establishing lost or obliterated corners.
3. Description of monument and accessories set to perpetuate the corner position.
4. Sketch or corner, show all pertinent data which can best be shown in a sketch example, corner marking, topography ties, position of accessories, etc.
5. Certification must be signed and sealed by Registered Land Surveyor in State of Montana.
6. Fill in Cross Index & Section Diagram at bottom of sheet.

• **CERTIFIED CORNER RECORDATION**

Corner North 1/4 Sec. 5 T. 36N R. 27W P.M.M. Lincoln County

Corner not previously set

Set brass cap by single proportion - See C. of S. No. 541
for adjacent corners.



SKETCH OF CORNER

CERTIFICATION

I, _____
certify the information shown herein is true and correct.

Signature Ground Party Chief

I, D.K. Marquardt
certify that this Corner Record correctly represents work performed
by me or under my direction in compliance with the "Corner
Recordation Act" (70-22-101, et seq., M.D.A.)

D.K. Marquardt
Signature of Surveyor & Seal

Date: 7-6-81 Reg. No. 2289ES

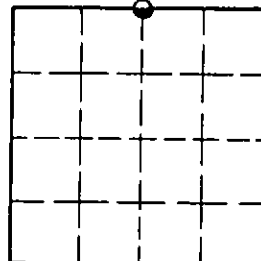
Employer: _____

Office of Clerk and Recorder, County of Lincoln. This "corner
record" was filed for record on the 17th July day of 1981
was noted on the cross-index plat and is assigned page No. 1156 in
book No. 1

Kenneth L. Tauscher, by Betty Lee,
County Official Deputy

Cross Index No. A-7 T. 36N R. 27W P.M.M.

Sec. 5



• - corner this sheet