

INSTRUCTIONS

1. Original and/or subsequent record used to evaluate the corner position.
2. Description of evidence found, note discrepancies in the record, state method of establishing lost or obliterated corners.
3. Description of monument and accessories set to perpetuate the corner position.
4. Sketch or corner, show all pertinent data which can best be shown in a sketch example, corner marking, topography ties, position of accessories, etc.
5. Certification must be signed and sealed by Registered Land Surveyor in State of Montana.
6. Fill in Cross Index & Section Diagram at bottom of sheet.

CERTIFIED CORNER RECORDATION

Corner 1/4 corner between Sec. 5 & 8 T. 36N R. 27W P.M.M. Lincoln County

Record:

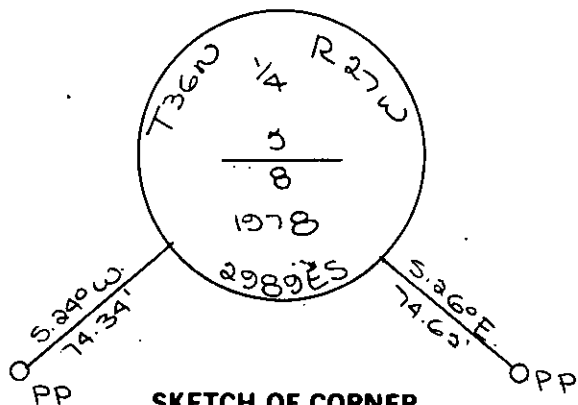
Set a post 3' long 3" square 24" in the ground marked 1/4 on South face from which:

a pine 14" dia. bears S. 53° E. 130 lks

a pine 12" dia. bears N. 42° W. 89 lks

Nothing found - Set brass cap by single proportion

See C. of S. No. 541 for section subdivision



SKETCH OF CORNER

CERTIFICATION

I, _____
certify the information shown herein is true and correct.

Signature Ground Party Chief

I, D.K. Maguardt

certify that this Corner Record correctly represents work performed by me or under my direction in compliance with the "Corner Recordation Act" (70-22-101, et seq., M.D.A.)

D.K. Maguardt
Signature of Surveyor & Seal

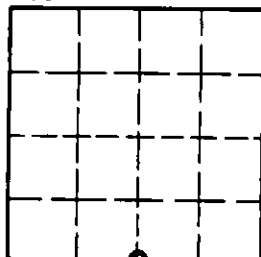
Date: 7-6-81 Reg. No. 2989ES

Employer: _____

Office of Clerk and Recorder, County of Lincoln. This "corner record" was filed for record on the 17th day of July, 1981, was noted on the cross-index plat and is assigned page No. 1155 in book No. 1

Cross Index No. E-7 T. 36N R. 27W P.M.M.

Sec. 5



• - corner this sheet