

CERTIFIED CORNER RECORDATION

Corner 1/4 S4/S3 T 36 N. R. 27 W. P.M.M. Lincoln County

I. Record: 1893 GLO Section Subdivision Survey By P. McCardell and A. Jaqueth: Set a sandstone 18X8X4 ins., 12 ins. in the ground, marked 1/4 on the west face. Establish pits for accessories.

1982 Corner Recordation, Book 1 Page 1538, Lincoln County Records by D.K. Marquardt, 2989ES;

Set by proportion, an Aluminum post, 30 ins. long, 2 1/2 ins. diam. 26 ins. in the ground, with Aluminum cap from which;

A rebar, bears N01°W, 184.25 ft.

A rebar, bears S88°E, 43.16 ft.

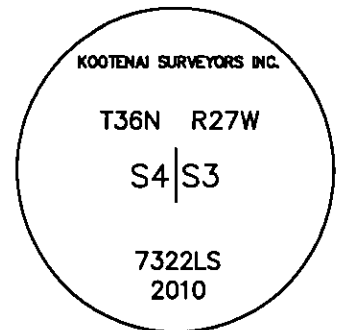
II. Found: A field search of area found a 2 1/2 inch diam. Aluminum post with a 3 1/4 inch diam. Aluminum cap firmly set.

III. Perpetuation: We removed the Marquardt monument due to road construction in the area. We replace the monument with a 5/8 inch diameter rebar 24 inches long, .60 feet below existing gravel road surface with a 3 1/4 inch diameter Aluminum cap marked as shown below from which:

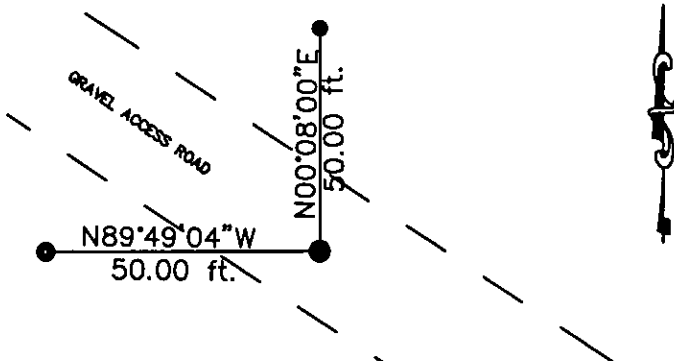
A 5/8 inch diameter rebar, 18 inches long with plastic cap marked Hughes, 7322LS bears N00°08'E, 50.00 feet distant.

A 5/8 inch diameter rebar, 18 inches long with plastic cap marked Hughes, 7322LS bears N89°49'04"W, 50.00 feet distant.

NOTE: Refer to P.F. Plat No. 6918  
Lincoln County Records for additional survey information.



Kootenai Surveyors Inc., 314 California Av., Libby, MT. 59923 (406) 293-4354



TVBP Sec. 3

SKETCH OF CORNER

CERTIFICATION

I, Kelly Rooney  
certify the information shown herein is true and correct.  
*Kelly Rooney*  
Signature of Ground Party Chief

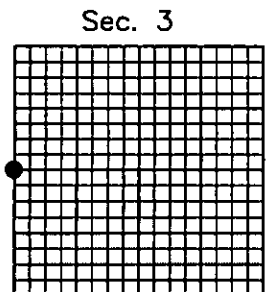
I, Alvah F. Hughes  
certify that this Corner Record correctly represents work performed by me or under my direction in compliance with the "Corner Recordation Act" (70-22-101, et seq., M.C.A.)  
*Alvah F. Hughes* 7322LS  
Signature of Surveyor & Seal

Date: 09/23/2010 Reg. No. 7322LS  
Employer: Kootenai Surveyors Inc.

Office of Clerk and Recorder, County of Lincoln This "corner record" was filed for rec 228818 BOOK: CCR CC&R'S PAGE: 11539 Pages: 1  
STATE OF MONTANA LINCOLN COUNTY  
was noted on the cross: RECORDED: 10/04/2010 8:35 KOI: CC&R'S  
book No. TAMMY D. LAUER CLERK AND RECORDER  
FEE: \$0.00 BY: *Jeannia Lauer*  
TO: KOOTENAI SURVEYORS INC P.O. BOX 393, LIBBY, MT 59923

Cross Index No. C 13 T. 36N R. 27W P.M., MT

Adopted July 1, 1981, Montana Board of Professional Engineers & Land Surveyors



• corner this sheet