

## INSTRUCTIONS

1. Original and/or subsequent record used to evaluate the corner position.
2. Description of evidence found, note discrepancies in the record, state method of establishing lost or obliterated corners.
3. Description of monument and accessories set to perpetuate the corner position.
4. Sketch or corner, show all pertinent data which can best be shown in a sketch example, corner marking, topography ties, position of accessories, etc.
5. Certification must be signed and sealed by Registered Land Surveyor in State of Montana.
6. Fill in Cross Index & Section Diagram at bottom of sheet.

• **CERTIFIED CORNER RECORDATION**

Corner NE cor. Sec. 5 - NW corner Sec. 4 T. 36N R. 27W P.M.M. Lincoln County  
closing corner

Record:

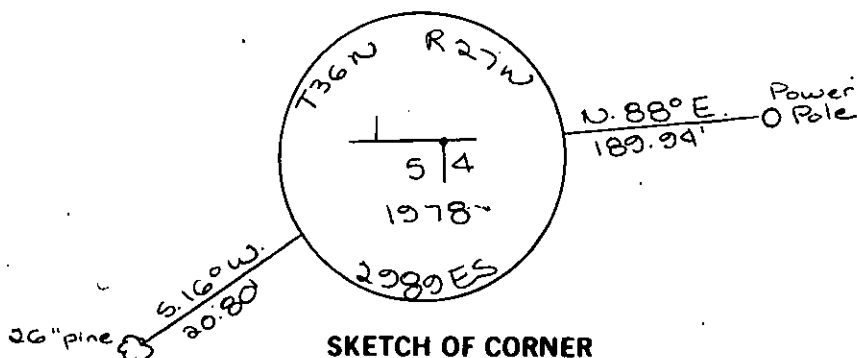
Set a sandstone 16x14x6 " 11" in the ground for closing corner marked CC with 4 notches on E and 2 notches on west faces from which:

a pine 20" diam. bears N. 56° 30' E. 116 lks.

Dug pit for other Rm

No evidence found - Set brass cap at intersection of the E county road and fence line

See C. of S. No 541 for adjacent corners



## CERTIFICATION

I, \_\_\_\_\_  
 certify the information shown herein is true and correct.

Signature Ground Party Chief

I, D.K. Marquardt  
 certify that this Corner Record correctly represents work performed by me or under my direction in compliance with the "Corner Recordation Act" (70-22-101, et seq., M.D.A.)

D.K. Marquardt  
 Signature of Surveyor & Seal

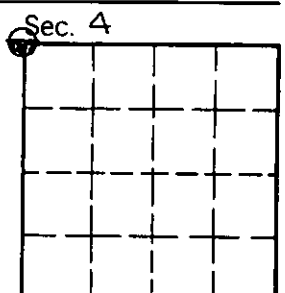
Date: 7-6-81 Reg. No. 2989 ES

Employer: \_\_\_\_\_

Office of Clerk and Recorder, County of Lincoln. This "corner record" was filed for record on the 17th July day of 1981 was noted on the cross-index plat and is assigned page No. 1151, in book No. 1

Eleonora L. Daugherty, by Betty Bell  
 County Official Deputy

Cross Index No. A-9 T. 36N R. 27W P.M.M.



• corner this sheet