

INSTRUCTIONS

1. Original and/or subsequent record used to evaluate the corner position.
2. Description of evidence found, note discrepancies in the record, state method of establishing lost or obliterated corners.
3. Description of monument and accessories set to perpetuate the corner position.
4. Sketch or corner, show all pertinent data which can best be shown in a sketch example, corner marking, topography ties, position of accessories, etc.
5. Certification must be signed and sealed by Registered Land Surveyor in State of Montana.
6. Fill in Cross Index & Section Diagram at bottom of sheet.

• CERTIFIED CORNER RECORDATION

Corner 1/4 cor. between Sec. 5 & 6 T. 36N R. 27W P.M.M. Lincoln County

Record:

Set a sandstone 18x8x8" 12" in the ground marked 1/4
on west face from which:

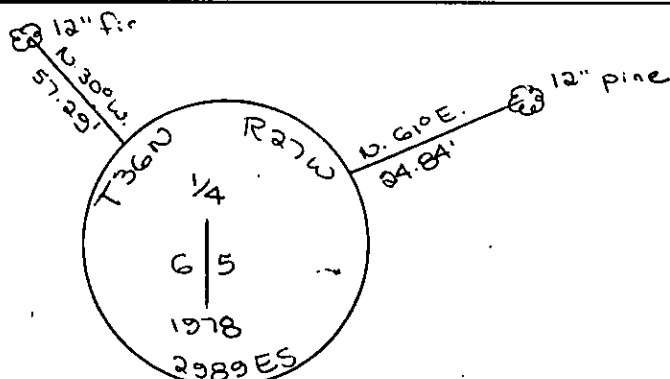
a pine 16" diam. bears N. 24° 30' E. 139 lks.

a pine 20" diam. bears N. 59° 30' W 59 lks.

Found original stone and 1 BT

Set brass cap and buried stone alongside

See C. of S. No. 541 for section subdivision.



SKETCH OF CORNER

CERTIFICATION

I, _____
certify the information shown herein is true and correct.

Signature Ground Party Chief

I, D.K. Maguacelt
certify that this Corner Record correctly represents work performed
by me or under by direction in compliance with the "Corner
Recordation Act" (70-22-101, et seq., M.D.A.)

D.K. Maguacelt
Signature of Surveyor & Seal

Date: 7-6-81 Reg. No. 2989 ES

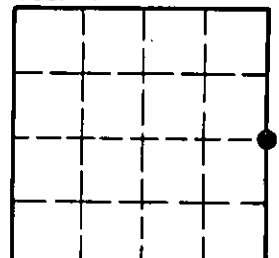
Employer: _____

Office of Clerk and Recorder, County of Lincoln. This "corner
record" was filed for record on the 17th July day of 1981,
was noted on the cross-index plat and is assigned page No. 1150, in
book No. 1

Thomas L. Vaughn, by Betty Bell,
County Official deputy

Cross Index No. C-5 T. 36N R. 27W PMM

Sec. 6



• - corner this sheet