

INSTRUCTIONS

1. Original and/or subsequent record used to evaluate the corner position.
2. Description of evidence found, note discrepancies in the record, state method of establishing lost or obliterated corners.
3. Description of monument and accessories set to perpetuate the corner position.
4. Sketch or corner, show all pertinent data which can best be shown in a sketch example, corner marking, topography ties, position of accessories, etc.
5. Certification must be signed and sealed by Registered Land Surveyor in State of Montana.
6. Fill in Cross Index & Section Diagram at bottom of sheet.

CERTIFIED CORNER RECORDATION

Corner East 1/4 corner Sec. 1 T. 36N R. 28W P.M.M. Lincoln County

Resurvey Record:

Set a fir post 3' long 3" eq. 24" in the ground marked
1/4 SI on west face from which:

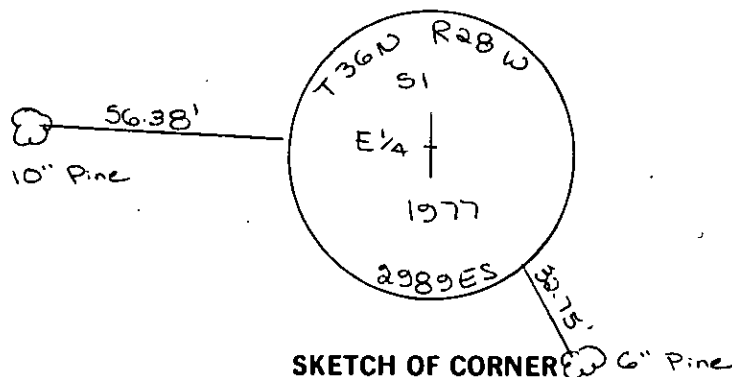
a pine 8" dia. bears N 77 1/2° E. 621 Ks

a pine 14" dia. bears S. 57° W. 121 Ks

Nothing found

Set brass cap record distance from W 1/4 corner Sec. 6,
T36N R27W

See C. of S. nos. 388 and 541 for adjacent corners.



SKETCH OF CORNER W 1/4 Pine

CERTIFICATION

I, _____
certify the information shown herein is true and correct.

Signature Ground Party Chief

I, D.K. Marquardt
certify that this Corner Record correctly represents work performed
by me or under my direction in compliance with the "Corner
Recordation Act" (70-22-101, et seq., M.D.A.)

D.K. Marquardt
Signature of Surveyor & Seal

Date: 7-6-81 Reg. No. 2989ES

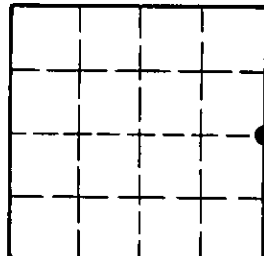
Employer: _____

Office of Clerk and Recorder, County of Lincoln. This "corner
record" was filed for record on the 17th July day of 1981
was noted on the cross-index plat and is assigned page No. 1147, in
book No. 1

Elmer L. Taughen, by Betty Lee,
County Official Deputy

Cross Index No. C-25 T. 36N R. 28W PMM

Sec. 1



• - corner this sheet