

CERTIFIED CORNER RECORDATION

Corner SEC COR. 2, 1, 11, 12 T. 37N R. 28W P.M.M. Lincoln County

1. Original GLO Survey by F. Sizer and A. Jaqueth 1894

Set:

A limestone, 14x8x6 ins., 10 ins. into the ground for corner to sections 1,2,11, and 12 marked with 5 notches on south and 1 notch on east edges.

From which:

- A pine, 11 ins. dia. bears N78°E, 60 lks. dist., mkd. "T37N R28W S1 BT".
- A Fir, 8 ins. dia. bears S72½°E, 64 lks. dist., mkd. "T37N R28W S12 BT".
- A Fir, 8 ins. dia. bears S85°W, 50 lks. dist., mkd. "T37N R28W S11 BT".
- A Fir, 10 ins. dia. bears N64°W, 76 lks. dist., mkd. "T37N R28W S2 BT".

Remonumentation by C.O.E. 1968

Information unknown

1989 Corner Recordation by Gene Warren MT. Reg. No. 2734S

Found:

An Original Stone with 2½ ins. brass cap, 10 ins. out of ground, set up against stone.

From which:

- A 20 ins. stump bears S85°W, 32.76 feet dist., no scribing visible.
- A 17 ins. stump bears N80°E, 39.63 feet dist., no scribing visible.
- A 21 ins. stump bears N64°W, 50.10 feet dist., no scribing visible.
- A 22 ins. Fir bears S70½°E, 42.10 feet dist., scribe overgrown.

Established:

- A 7 ins. Fir bears N25°W, 19.13 feet dist., scribed "T37N R28W S2 BT".
- A 9 ins. Pine bears N15°E, 34.88 feet dist., scribed "T37N R28W S1 BT".
- A 16 ins. Pine bears S64°W, 33.75 feet dist., scribed "T37N R28W S11 BT".

Maintained found BT's with required signs and paint and set a USDA steel post 3 ft. East.

2. Found:

- A 2½ ins. Brass Monument, 10 ins. out of ground with a stone on the north side.
- A rotted stump bears N80°E, 39.63 feet dist., chop marks visible.
- A 23 ins. Douglas Fir bears S72½°E, 42.10 feet to aluminum nail & well healed face.
- A rotted stump bears S85°W, 32.76 feet dist, chop marks visible.
- A rotted stump bears N64°W, 50.10 feet dist., chop marks visible.
- A down and dead 9 ins. Ponderosa Pine bears N15°E, 34.88 feet dist., scribe T37N R28W S1 BT visible.
- An 18 ins. Ponderosa Pine bears S64°W, 33.25 feet to alum. nail, T37N R28W visible.
- A 10 ins. Douglas Fir bears N25°W, 19.13 to alum. nail, T37N R28W visible.
- A steel post with LSM decal bears East, 3.0 feet dist.
- A 7 ins. wood post bears West, 1.50 feet dist.

3. Stacked and painted a small mound of stone around monument.

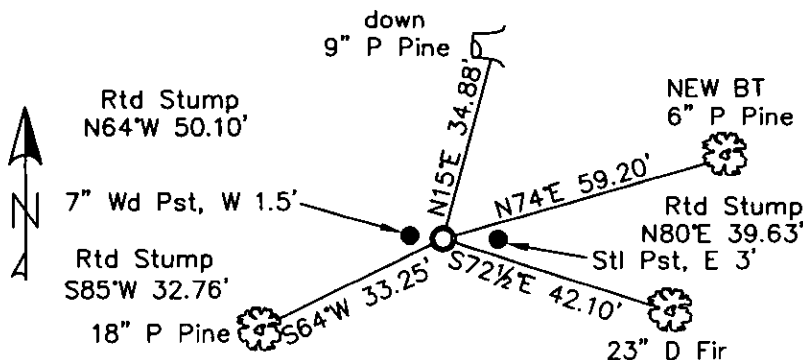
Established:

A 6" Ponderosa Pine bears N74°E, 59.20 ft. dist. scribed "T37N R28W S1 BT".

Repainted rings and blazes on existing BT's. Placed new BT tag on S12 BT.

T37N R28W
2 | 1
11 | 12
C.E. 68

MAGNETIC DECLINATION— 16° EAST



SKETCH OF CORNER

CERTIFICATION
I, CURT HECKROTH, certify the information shown herein is true and correct.
LAWRENCE A. GLAHE
certify that the Corner Recordation represents work performed by me or under my direction in compliance with the "Corner Recordation Act" (MCA 82-101, et seq., M.C.A.)
9748 LS
Date: 1-25-20
Employer: GLAHE & ASSOCIATES, INC.
9748 LS

Office of Clerk and Recorder, County of Lincoln. This "corner

record" was filed for record on

224102 BOOK: CCR CC&R'S PAGE: 11354 Pages: 1

Sec. 11

was noted on the cross-index plat

STATE OF MONTANA LINCOLN COUNTY

RECORDED: 01/27/2010 12:24 KOI: CC&R'S

TAMMY D. LAUER CLERK AND RECORDER

book No.

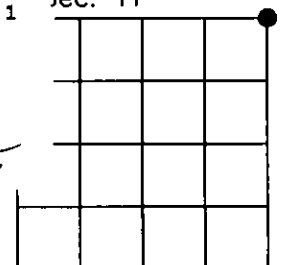
FEE: \$0.00

BY:

TO: FILED

Cross Index No. E-21 T. 37N R. 28W PMM

Adopted July 1, 1981, Montana Board of Professional Engineers & Land Surveyors



● corner this sheet