

CERTIFIED CORNER RECORDATION

Corner CW 1/16 Sec. 29 T. 36N R. 27W P.M.M. Lincoln County

1. 1980 Certified Land Corner Recordation by Ralph Putnam, Reg. No. 4375S: Set 5/8 ins. rebar with cap marked Putnam 4375-S.

1995 Certified Corner Recordation by Ronald A. Pearson, Reg. No. 9008LS: Found 5/8 ins. dia. steel rebar, 5 ins. above the ground with cap marked Putnam, 4375-S. Accepted and remonumented rebar position with 2 1/2 ins. diam. by 30 ins. long aluminum pipe, 22 ins. in the ground with 3 1/4 ins. diam., U.S.D.A., Forest Service aluminum cap, marked as shown:

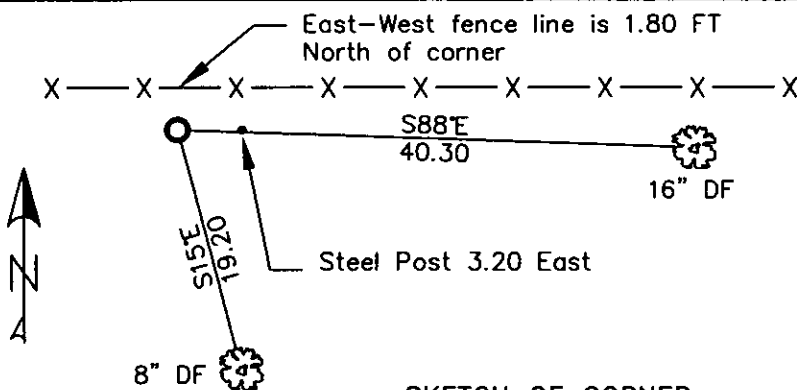
From which

A fir, 12 ins. diam., bears S88°E, 40.3 ft. dist., mkd. CW 1/16 S29 BT
A fir, 5 ins. diam., bears S15°E, 19.2 ft. dist., mkd. X BT.
Painted red bands around the bearing trees and attached Land Survey Monument and Bearing Tree signs.
Set a 6 ft. galvanized steel guard post with Land Survey Marker and Property Boundary decals, North, 3.4 ft.
Bury found rebar and cap inside aluminum pipe.

2. Found 3 1/4 ins. USDA Aluminum monument 6 ins. out of ground. (Stamping faces S60°E not North as supposed to be).
A 16 ins. douglas fir bears S88°E, 40.30 ft. dist. with partially healed face. Illegible scribing visible.
An 8 ins. douglas fir bears S15°E, 19.20 ft. dist. with well healed face.
A steel post with LSM & Boundary decals, 3.20 ft. East (Record 3.40 ft. North)
3. Stacked and painted small mound of stone around monument.
Placed aluminum nails at record distances.
Repainted rings and blazes and put up new BT tags on BT's.

T36N R27W
CW 1/16 S29
9008 LS
1995

MAGNETIC DECLINATION - 16° EAST



SKETCH OF CORNER

CERTIFICATION

I, CURT HECKROTH *Curt Heckroth*
certify the information shown is true and correct.

Signature Ground Party: Lawrence A. Glahe

I, LAWRENCE A. GLAHE
certify that this Corner Recordation represents work performed by me or under my direct supervision in compliance with the "Corner Restoration Act" (MCA 22-101, et seq., M.S.A.)

Date: 1-25-10 9748 LS

Employer: GLAHE & ASSOCIATES

Office of Clerk and Recorder, County of Lincoln. This "corner

record" was filed for record on 224101 BOOK: CCR CC&R'S PAGE: 11353 Pages: 1

was noted on the cross-index STATE OF MONTANA LINCOLN COUNTY RECORDED: 01/27/2010 12:23 KOI: CC&R'S

book No. TAMMY D. LAUER CLERK AND RECORDER

FEE: \$0.00

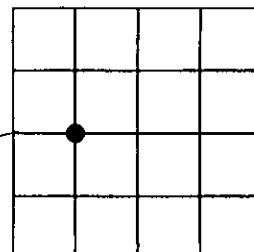
BY: *Tammy D. Lauer*

TO: FILED

Cross Index No. T-6 T. 36N R. 27W PMM

Adopted July 1, 1981, Montana Board of Professional Engineers & Land Surveyors

Sec. 29



● corner this sheet