

# CERTIFIED CORNER RECORDATION

Corner C 1/4 Sec. 29 T. 36N R. 27W P.M.M. Lincoln County

1. 1980 Certified Land Corner Recordation by Ralph Putnam, Reg. No. 4375S: Set 5/8 ins. rebar with cap marked Putnam 4375-S.

1995 Certified Land Corner Recordation by Ronald A. Pearson, Reg. No. 9008LS: Found 5/8 ins. dia. steel rebar, 5 ins. above the ground with cap marked Putnam, 4375-S. Accepted and remonumented rebar position with 2 1/2 ins. diam. by 30 ins. long aluminum pipe, 24 ins. in the ground, with 3 1/4 ins. diam., U.S.D.A. Forest Service aluminum cap, marked as shown:

From which

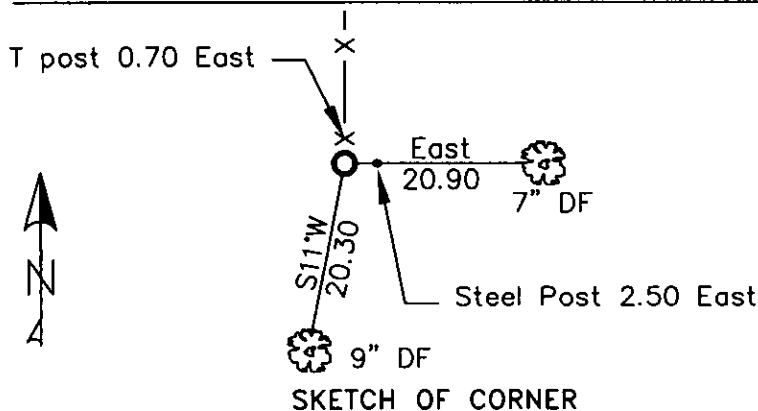
A fir, 6 ins. diam., bears East, 20.9 ft. dist., mkd. C 1/4 S29 BT.  
A fir, 8 ins. diam., bears S11°W, 20.3 ft. dist., mkd. C 1/4 S29 BT.  
Painted red bands around the bearing trees and attached Land Survey Monument and Bearing Tree signs.  
Set a 6 ft. galvanized steel guard post with Land Survey Marker and Property Boundary decals, East, 2.5 ft.  
Bury found rebar and cap inside aluminum pipe.

2. Found 3 1/4 ins. USDA Aluminum monument 6 ins. out of ground.  
A 7 ins. douglas fir East 20.90 ft., well healed face.  
A 9 ins. douglas fir S11°W 20.30 ft., well healed face.  
A steel post with LSM & Boundary decals 2.50 ft. East.  
Green T post with Barbed wire going North. 0.70 ft. East of corner.

3. Stacked and painted a small mound of stone around monument.  
Placed aluminum nails at record distances.  
Repainted rings and blazes on BT's.  
All tags are in good shape.

T36N R27W  
C 1/4 S29  
9008 LS  
1995

MAGNETIC DECLINATION - 16° EAST



CERTIFICATION  
I, CURT HECKROTH, certify the information shown above is true and correct.  
Signature Ground Party Clerk  
I, LAWRENCE A. GLAHE, certify that this Corner Recordation represents work performed by me or under my direct supervision in compliance with the "Corner Recordation Act" (MCA 13-2-101, et seq., M.C.A.)  
Date: 1-25-10  
Employer: GLAHE & ASSOCIATES, INC.  
9748 LS  
MONTANA  
REGISTERED  
LAND SURVEYOR

Office of Clerk and Recorder, County of Lincoln. This "corner

record" was filed for record o 224100 BOOK: CCR CC&R'S PAGE: 11352 Pages: 1

was noted on the cross-index) STATE OF MONTANA LINCOLN COUNTY RECORDED: 01/27/2010 12:22 KOI: CC&R'S

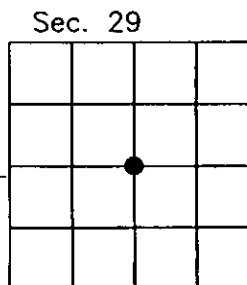
book No. TAMMY D. LAUER CLERK AND RECORDER

FEE: \$0.00

TO: FILED

Cross Index No. T-7 T. 36N R. 27W PMM

Adopted July 1, 1981, Montana Board of Professional Engineers & Land Surveyors



● corner this sheet