

CERTIFIED CORNER RECORDATION

Corner 1/4 Sec. 29/28 T. 36N R. 27W P.M.M. Lincoln County

1. 1893 original G.L.O. record by Peter McCardell and Abram L. Jaqueth: Set stone and marked two bearing trees.

1968 remonumentation B.L.M. record by Woodrow E. Damm et al: The 1/4 sec. of secs. 28 and 29, monumented with a limestone, 18x9x4 ins., firmly set, mkd. 1/4 on the W. face and witnessed by the remains of the original bearing trees:

At the corner point

Set an iron post, 30 ins. long, 2 1/2 ins. diam., 24 ins. in the ground with brass cap mkd as shown.

From which the original bearing trees:

- A stump, 23 ins. diam., bears N33°W, 30 lks. dist., mkd. BT. (record)
- A stump, 26 ins. diam., bears S37 1/2°E, 82 lks. dist., mkd. BT. (record)

The new bearing trees:

- A fir, 11 ins. diam., bears S84°W, 17 lks. dist., mkd. 1/4 S29 BT.
- A fir, 6 ins. diam., bears N38°W, 11 lks. dist., mkd. X BT.
- Bury the original stone alongside the iron post.

1995 Certified Corner Recordation by Ronald A. Pearson. MT Reg. No. 9008LS:  
Found:

- A 2 1/2 ins. diam. iron pipe, 3 ins. out of ground with 3 1/4 ins. diam. B.L.M. brass cap marked as shown above.
- A fir, 13 ins. diam., bears S84°W, 11.2 ft. (17 lks.) dist., healed face.
- A fir stump, 12 ins. diam., bears N38°W, 7.2 ft. (11 lks.) dist., no visible scribe.
- A stump, 21 ins. diam., bears N33°W, 19.8 ft. (30 lks.) dist., mkd. BT.

Established one new bearing tree:

- A fir, 8 ins. diam., bears N50°E, 34.4 ft. dist., mkd. 1/4 S28 BT.
- Painted red bands around the bearing trees and attached LSM and BT signs.
- Set a 6 ft. galvanized steel guard post with LSM and PB decals, South, 3 ft.

2. Found:

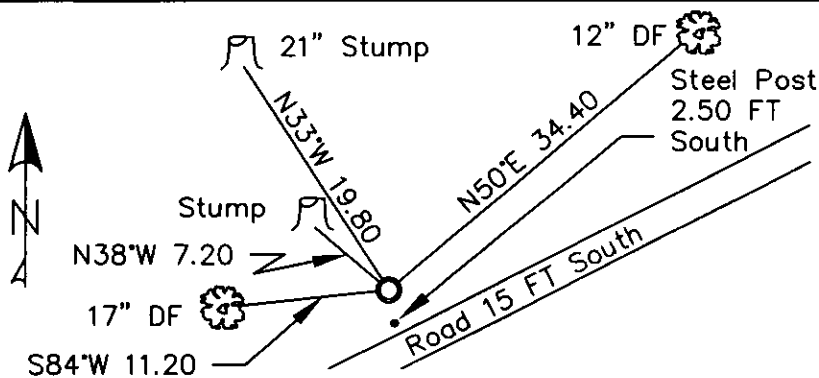
- A 3 1/4 ins. BLM brass monument 3 ins. out of ground with a stone on North side.
- A 12 ins. douglas fir N50°E 34.40 ft., well healed face (1995).
- A 17 ins. douglas fir S84°W 11.20 ft., well healed face (1968).
- A 12 ins. stump cutoff at ground level N38°W 7.20 ft.
- A 21 ins. X 3.50 ft. high stump N33°W 19.80 ft., open face BT visible.
- A Steel post with LSM and Boundary decals 2.50 ft. South.

3. Stacked and Painted a small mound of stone around monument.

Placed aluminum nails at record distances, repainted rings and blazes and put new BT tags up.

T36N R27W  
1/4  
S29/S28  
1968

MAGNETIC DECLINATION— 16° EAST



SKETCH OF CORNER

CERTIFICATION  
I, CURT HECKROTH, certify the information shown is true and correct.  
Signature Ground Party Officer  
LAWRENCE A. GLAHE  
I, LAWRENCE A. GLAHE, a duly Licensed Professional Engineer and Land Surveyor, certify that this Corner Recordation was performed by me or under my direct supervision in compliance with the "Corner Recordation Act" (MCA 95-2-101, et seq., M.C.A.)  
Date: 1-25-10  
Employer: GLAHE & ASSOCIATES, INC.  
9748 LS

Office of Clerk and Recorder, County of Lincoln. This "corner

record" was filed for record on 224099 BOOK: CCR CC&R'S PAGE: 11351 Pages: 1

was noted on the cross-index p STATE OF MONTANA LINCOLN COUNTY

book No. RECORDED: 01/27/2010 12:21 KOI: CC&R'S

TAMMY D. LAUER CLERK AND RECORDER

FEE: \$0.00

BY: [Signature]

TO: FILED

Cross Index No. T-9 T. 36N R. 27W PMM

Adopted July 1, 1981, Montana Board of Professional Engineers & Land Surveyors

Sec. 29


● corner this sheet