

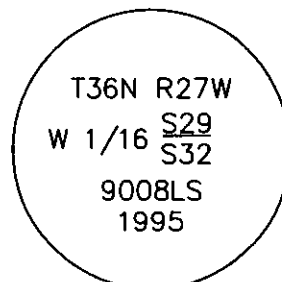
CERTIFIED CORNER RECORDATION

Corner W 1/16 Sec. 29 T. 36N R. 27W P.M.M. Lincoln County

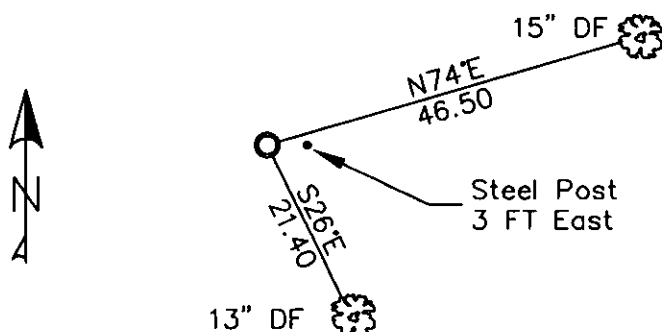
1. 1997 Certified Corner Recordation by Ronald A. Pearson, MT Reg. No. 9008LS;
Set a 2 1/2 ins. diam. by 30 ins. long aluminum pipe in mound of stone with
3 1/4 ins. diam., U.S.D.A. Forest Service aluminum cap, marked as shown.

From which

- A fir, 11 ins. diam., bears N74°E, 46.5 ft. dist., mkd. W 1/16 S29 BT.
A fir, 10 ins. diam., bears S26°E, 21.4 ft. dist., mkd. W 1/16 S29 BT.
Painted red bands around the bearing trees and attached Land Survey Monument and
Bearing Tree signs.
Set a 6 ft. galvanized steel guard post with Land Survey Marker and Property Boundary
decals, East 3.1 ft.
2. Found 3 1/4 ins. U.S.D.A. aluminum monument 11 ins. out of ground surrounded by a
small mound of stone.
A 15 ins. douglas fir, N74°E 46.50 ft., well healed face.
A 13 ins. douglas fir, S26°E 21.40 ft., well healed face.
A steel post with LSM and Boundary decals 3 ft. East.
 3. Restacked and painted stones around monument.
Repainted rings and blazes and put aluminum nails at record distances.
Replaced damaged BT tag on Sec. 29 BT.



MAGNETIC DECLINATION - 16° EAST



SKETCH OF CORNER

CERTIFICATION
I, CURT HECKROTH *Curt Heckroth*
certify the information shown above is true and correct.

Signature Ground Party: *Lawrence A. Glahe*
I, LAWRENCE A. GLAHE
certify that this Corner Recordation was performed by me or under my direct supervision in compliance with
the "Corner Recordation Act", MCA 15-2-101, et seq. (M.A.)

9748 LS
REGISTERED
AND SURVEYOR

Date: 12/5/10 9748 LS
Employer: GLAHE & ASSOCIATES

Office of Clerk and Recorder, County of Lincoln. This "corner

record" was filed for record c 224098 BOOK: CCR CC&R'S PAGE: 11350 Pages: 1

was noted on the cross-index STATE OF MONTANA LINCOLN COUNTY RECORDED: 01/27/2010 12:20 KOI: CC&R'S

book No. TAMMY D. LAUER CLERK AND RECORDER FEE: \$0.00

TO: FILED

BY *Tammy D. Lauer*

Cross Index No. V-6 T. 36N R. 27W PMM

Adopted July 1, 1981, Montana Board of Professional Engineers & Land Surveyors

Sec. 29

● corner this sheet