

# CERTIFIED CORNER RECORDATION

Corner 1/4 Cor. Secs. 29 & 32 T. 36N R. 27W P.M.M. Lincoln County

1. 1903 original G.L.O. record by Abraham L. Rinearson and Gordon C. Smith: Set stone and marked two bearing trees.

1969 remonumentation B.L.M. record by Roy G. Leedy: The 1/4 sec. cor. of secs. 29 and 32, monumented with a porphyry stone, 14x10x5 ins. firmly set, mkd 1/4 on the N. face and witnessed by the remains of the original bearing trees:

A stump, bears S17°W, 16 lks. dist. with fallen log, mkd. 1/4 S32 BT lying alongside.  
A stump, bears N5°W, 39 lks. dist. mkd. 1/4 S29 BT.

At the corner point

Set and iron post, 30 ins. long, 2 1/2 ins. diam., 18 ins. in the ground, to bedrock, and in the mound of stone, 3 ft. diam., to top, with brass cap mkd.

From which

A fir, 10 ins. diam., bears S23 3/4°W, 18 lks. dist., mkd. 1/4 S32 BT.  
A fir, 9 ins. diam., bears N64°W, 44 lks. dist., mkd. 1/4 S29 BT.  
Bury the original stone alongside the iron post.

1997 Certified Corner Recordation by Ronald A. Pearson, MT Reg. No. 9008LS:

Found a 2 1/2 ins. diam., iron pipe, 10 ins. out of ground with 3 1/4 ins. diam. B.L.M. brass cap marked as shown, from which

A fir, 10 ins. diam., bears S24°W 12.3 ft. (18 lks.) dist., healed face.  
A fir, 11 ins. diam., bears N58°W 29.4 ft. (44 lks.) dist., healed face.  
A stump, bears N3°W, 25.2 ft. (38 lks.) dist., mkd. 1/4 S29 BT.  
Painted red bands around the bearing trees and attached Land Survey Monument and Bearing Tree signs.

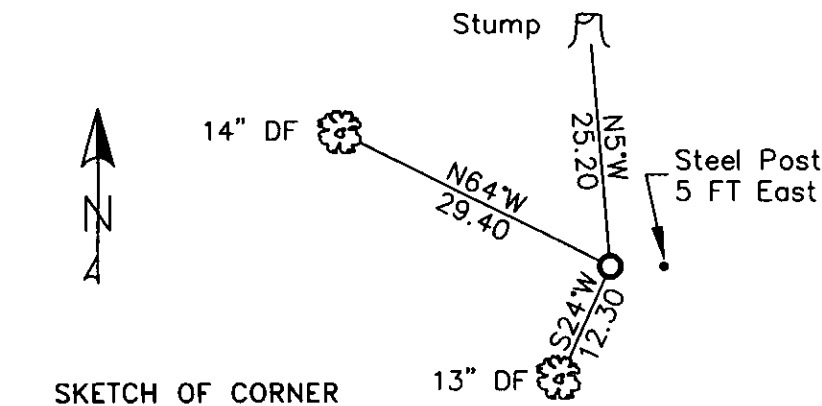
2. Found 3 1/4 ins. BLM brass monument 10 ins. out of ground surrounded by small mound of stone.

A 13 ins. douglas fir S24°W 12.30 ft., well healed face.  
A 14 ins. douglas fir N64°W 29.40 ft., well healed face.  
Stump N5°W 25.20 ft. 1/4 S29 BT visible.  
Steel post with LSM and Boundary decals 5 ft. East.

3. Restacked and painted stones around monument.

Repainted rings and blazes on BT's.  
Put aluminum nails at record distances.  
Put new BT tag on Sec. 29 BT.

MAGNETIC DECLINATION - 16° EAST



SKETCH OF CORNER

CERTIFICATION  
I, CURT HECKROTH, certify the information above is true and correct.

LAWRENCE A. GLAHE  
I, LAWRENCE A. GLAHE, certify that the Corner Record correctly represents work performed by me or under my direct supervision in compliance with the "Corner Recordation Act" (MCA 82-2-101, et seq., MCA).

9748 LS  
MONTANA  
LAND SURVEYORS  
Date: 1-25-10  
Employer: GLAHE & ASSOCIATES, INC.

Office of Clerk and Recorder, County of Lincoln. This "corner

record" was filed for record 224097 BOOK: CCR CC&R'S PAGE: 11349 Pages: 1

was noted on the cross-index STATE OF MONTANA LINCOLN COUNTY

TAMMY D. LAUER CLERK AND RECORDER

book No. FEE: \$0.00

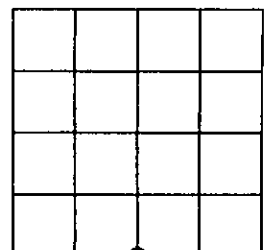
BY:

TO: FILED

Cross Index No. V-7 T. 36N R. 27W PMM

Adopted July 1, 1981, Montana Board of Professional Engineers & Land Surveyors

Sec. 29



● corner this sheet